



citrix

What's new and what's next

Nathanael Davison

Product Management - Citrix (Cloud Software Group)

EUC Forum March 2024

XenServer™

We're...

... back!

... no longer free!

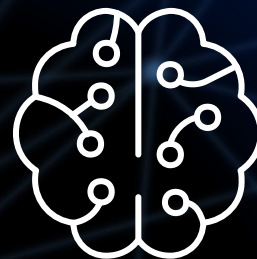
... launching XenServer 8 today!

... the best hypervisor for Citrix!

citrix[®]
**Product
priorities:
2024 and
beyond**



inherently
zero trust



automated &
intelligent

**hybrid
multi-cloud**

next-generation
experiences

cost-optimised &
sustainable

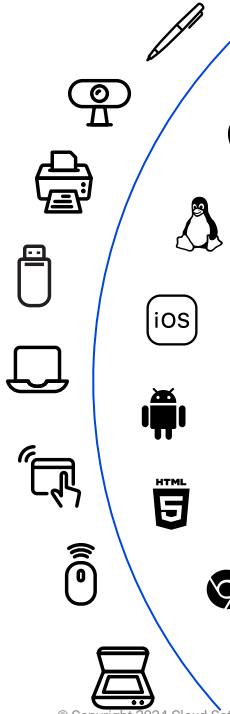



User & Endpoint

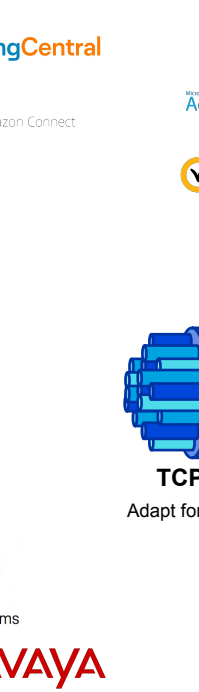
Network & Access

Apps & Desktops

**700 Citrix Ready ISV partners
& 5200 products certified**

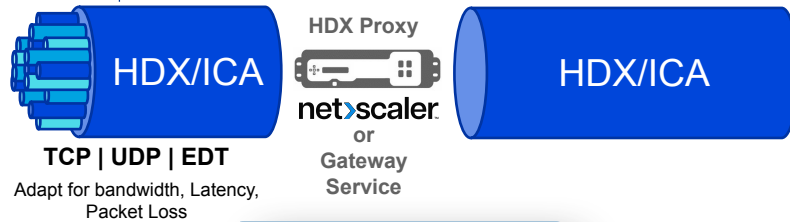
Peripherals


Client Platforms


Unified Communications


IGEL
AVAYA

Adaptive Authentication

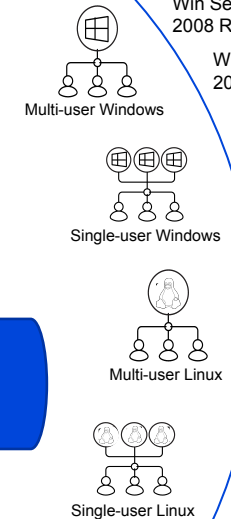



HDX/ICA | **HDX/ICA**

TCP | UDP | EDT
Adapt for bandwidth, Latency, Packet Loss


HDX Proxy
netScaler
or
Gateway Service



Delivery Models


Operating Systems
 Win Server 2008 R2
 Win Server 2012 R2
 Win Server 2016
 Win Server 2019
 Win Server 2022
 Windows 11
 Windows 10
 Windows 7
 Ubuntu
 RedHat
 SUSE
 Debian
 CentOS
 Amazon Linux 2
 macOS

Delivery Platforms
 XenServer™
NUTANIX
 vmware vSphere
 Microsoft Hyper-V
 Physical Systems
Azure
 Google
ORACLE CLOUD
aws
 vmware
 IBM Cloud
WorkSpaces

Remote PC


LTSR.next targeted for H1 2024

Note: 1912 LTSR EOL Dec 2024

Key Enhancements From 2203 LTSR to 2402 LTSR



Workload and Device Flexibility

- Support for latest VMware and Nutanix platform components
- Support for VMware cloud solutions on Azure, GCP, and AWS
- PVS on Azure and GCP
- New distro support with Linux VDA
- Support for Non Domain Joined VM with DaaS
- Azure AD Joined VDA support with DaaS

+ 30 additional enhancements



Operational and IT Efficiency

- Citrix Web Studio for on premises
- Citrix autoscale for on premises
- Multi-site management in Studio
- Auto-expansion policies for profile containers
- Secure Private Access integrated into Web Studio
- Policy sets for simpler policy mgmt
- Vertical load balancing for site & delivery group
- Terraform Provider support

+ 57 additional enhancements



Security and Compliance

- Variety of enhancements to Session Recording
- Support for Azure Trusted Launch & Confidential VMs
- Support for Device Guard on vSphere
- TLS 1.3 support
- Secure Private Access & Enterprise Browser for on-prem
- WEM process hierarchy control
- App Access Control
- Various security enhancements in PVS

+ 18 additional enhancements

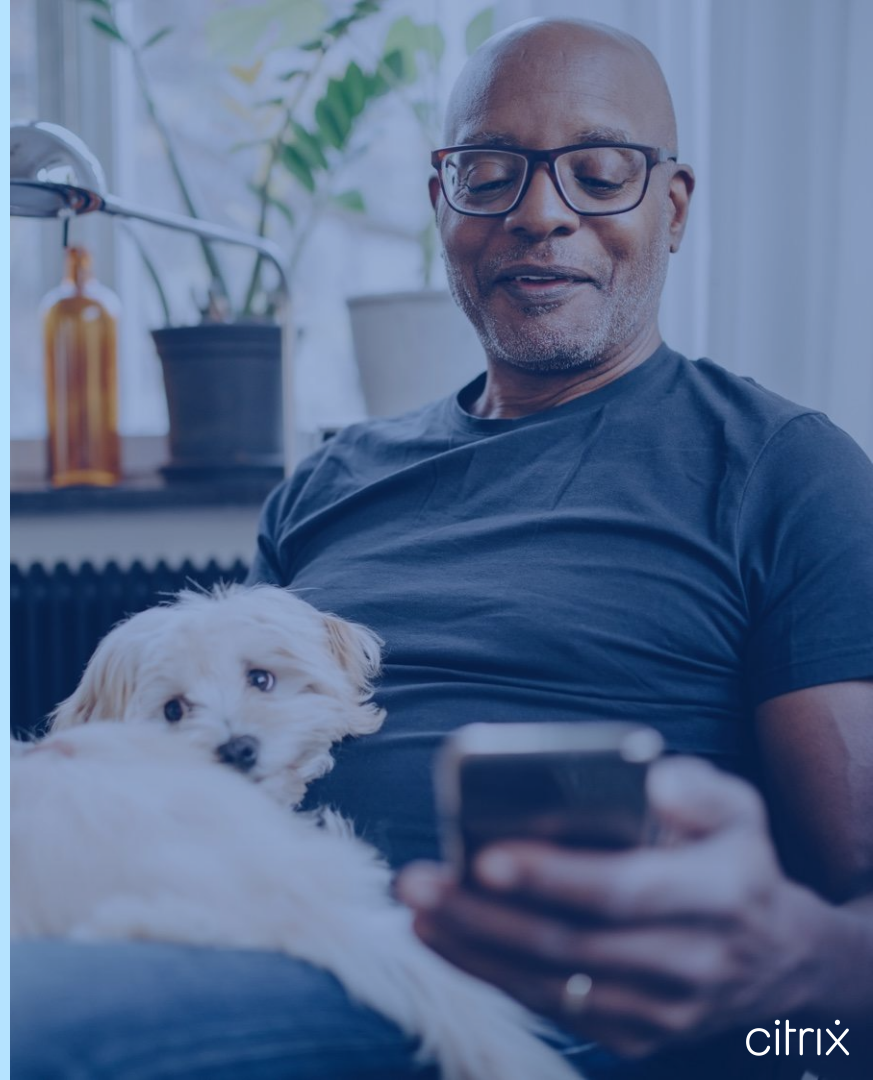
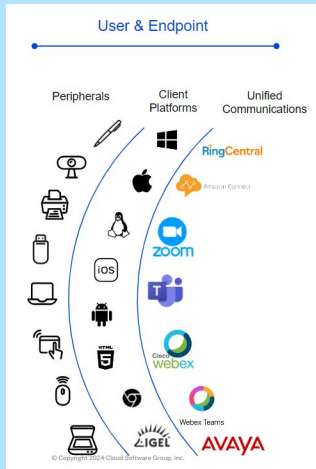


End User Experience

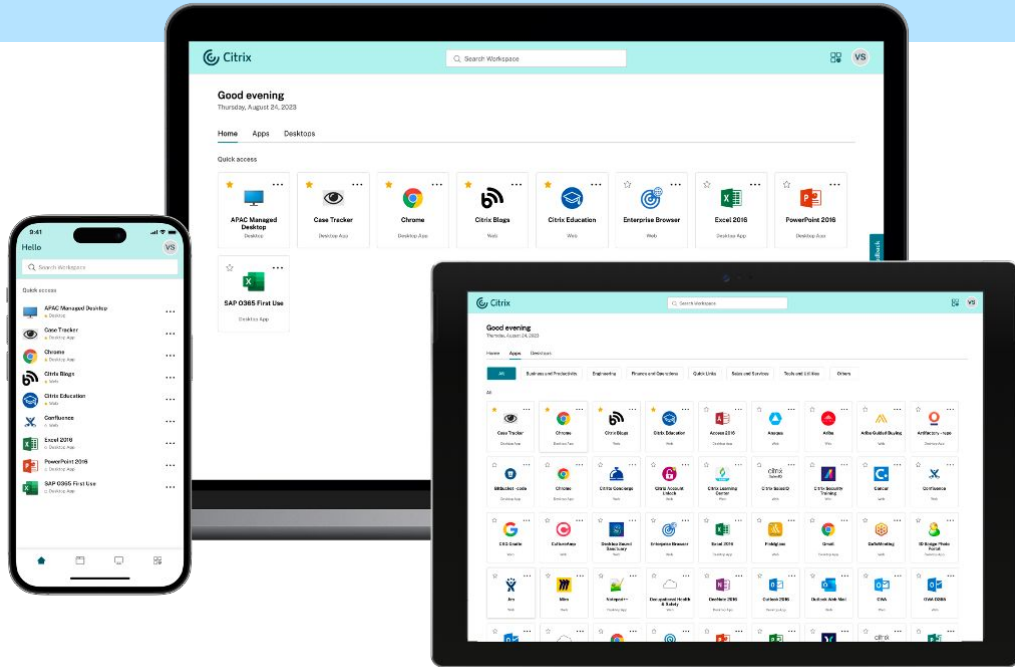
- New UI in CWA & Activity Manager
- Support for AV1 video codec
- Automatic video codec select
- Microsoft Teams background blurring and simulcast
- Support for 10-Bit High Dynamic Range (HDR)
- Unified Communications SDK 3.0
- Enhanced Build-to-lossless
- Loss-tolerant mode for graphics
- Many enhancements to Linux VDA

+ 33 additional enhancements

User & Endpoint

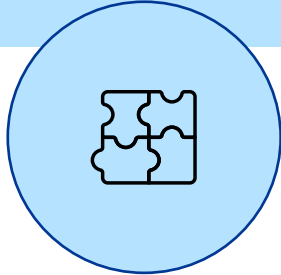


StoreFront Cloud (Workspace): Modern-simplified UI

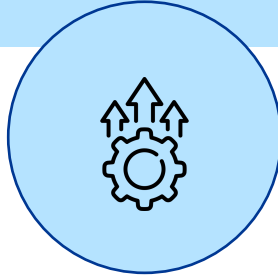


- First Time User onboarding
- Intuitive UI for simple and descriptive view
- Apps tab to scale for categories and sub-categories
- Search enhancement: Fuzzy search, search by categories, app type, etc

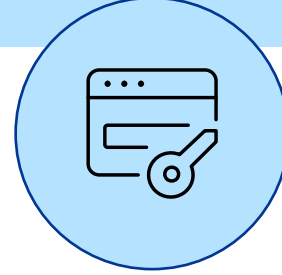
Citrix Enterprise Browser: Latest Developments



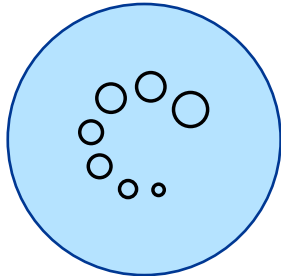
Support for custom extensions



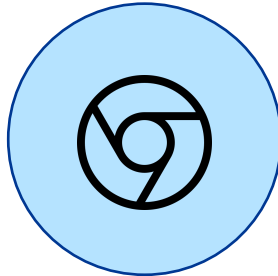
Upgrade CEB independent of CWA



Simplified SSO for on-prem with UI support (GACS)



Reconnect experience enhancements



User agent to match Chromium



Support for auth within CEB

Secure Private Access On-Prem

Citrix ZTNA on-premises solution leveraging existing infrastructure
(StoreFront and NetScaler on-premises)



Integrated SPA Installer with CVAD 2311

- SPA installed by default as part of DDC installation
- Standalone SPA installer (LTSR friendly)



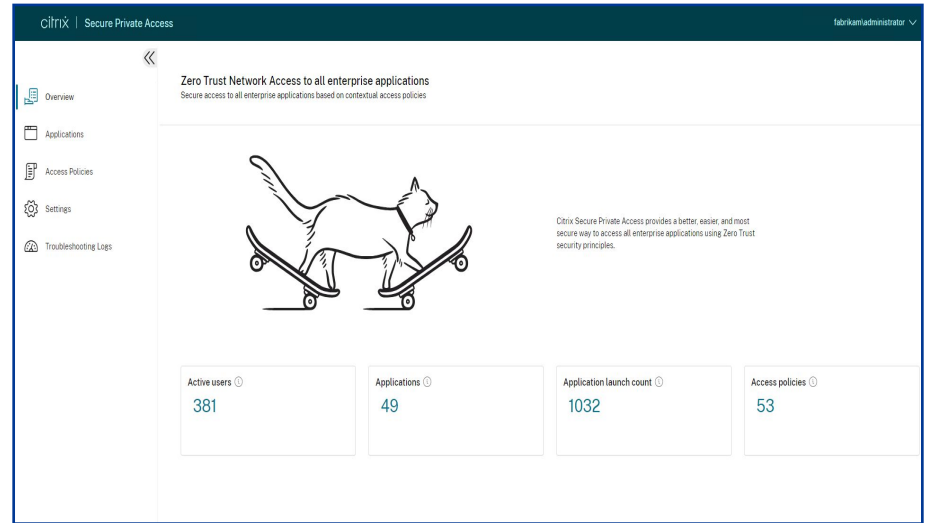
Configuration and Admin UI

- Initial configuration wizard
- Web-based management (*SPA service experience*)
- Dynamic policy and authorization (NetScaler) evaluation
- Contextual access
- Simplified configuration in StoreFront 2311
- NetScaler script auto generation
- Admin roles
- Web Studio integration



Monitoring

- SPA Dashboard
- Troubleshooting



Network & Access

Network & Access

700 Citrix Ready ISV partners
& 5200 products certified

Active Directory okta Duo

Symantec SAML A G

Adaptive Authentication

HDX/ICA HDX Proxy
netScaler HDX/ICA
or
Gateway Service

TOP | UDP | EDT
Adapt for bandwidth, Latency,
Packet Loss





Enhancements

Support for AV1 Codec

- Supports encoding for NVIDIA and Intel GPUs & decoding for NVIDIA, AMD & Intel GPUs

Enhanced Video Codec Selection

- Detect endpoint's decoding capabilities during installation

Audio loss-tolerant mode

- Addresses challenges of high latency, packet loss, and unpredictable conditions

Audio Enhancements

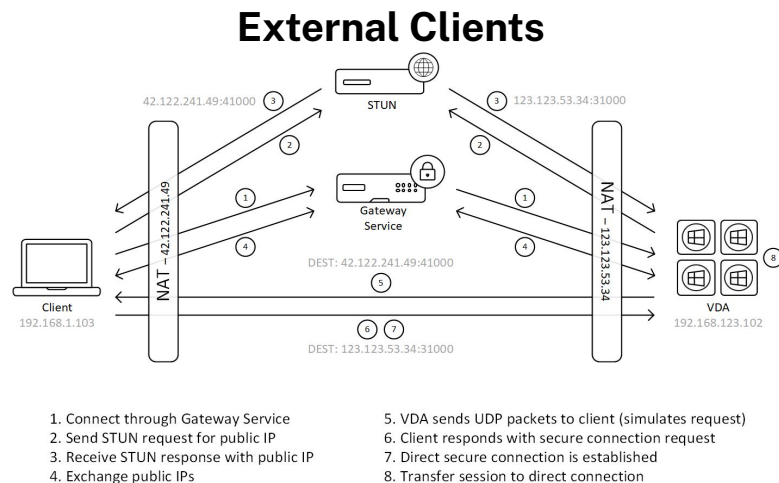
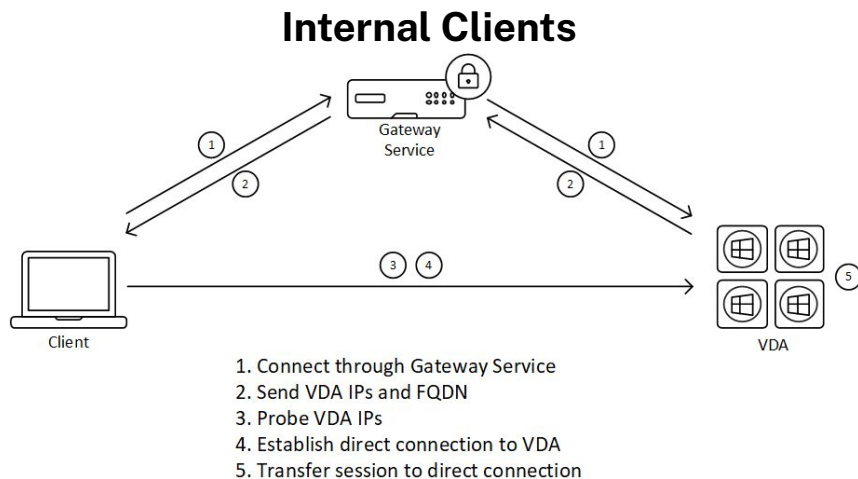
- Audio device management
 - In-session device selection
 - Volume sync between VDA & client
- Echo cancellation for HTML5 and Chrome OS
- Adaptive Audio for IOS



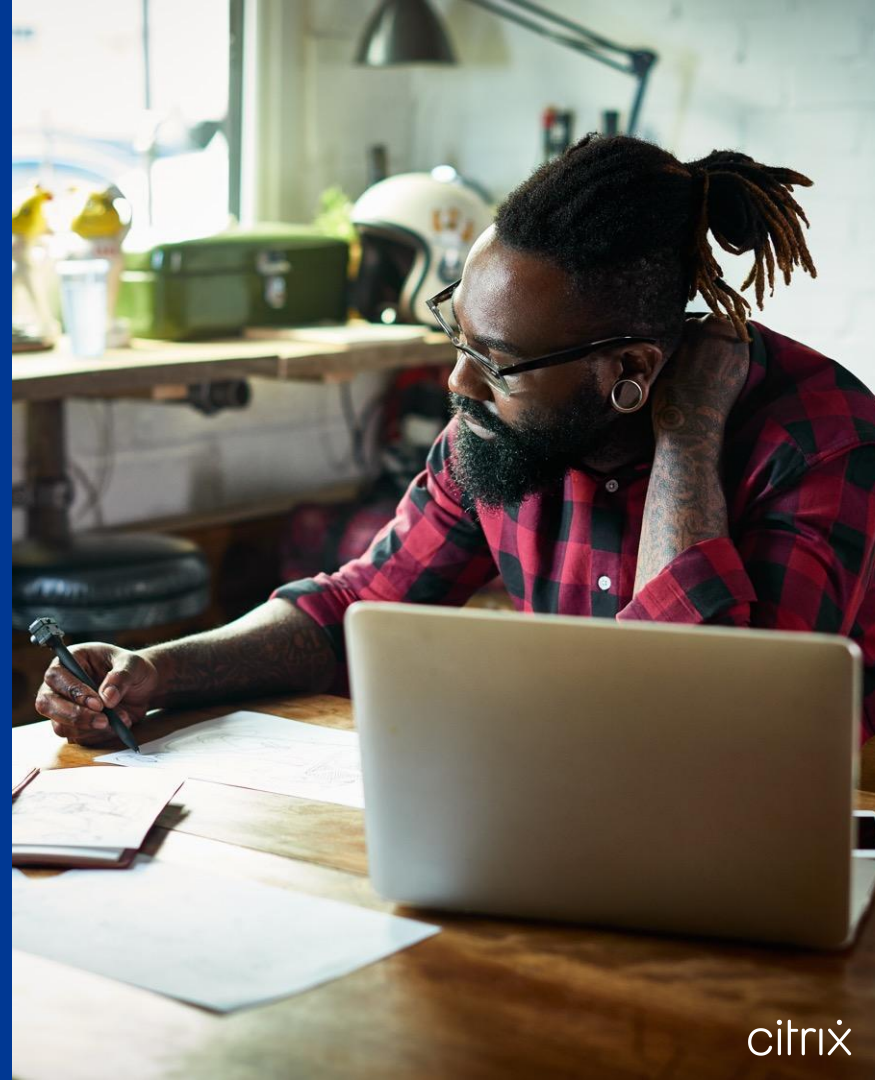
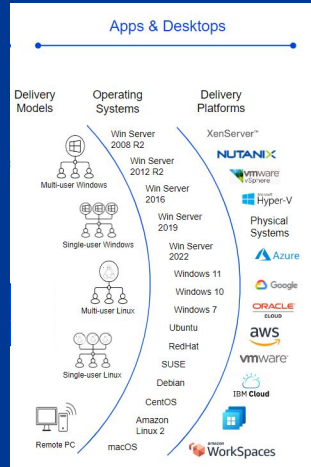
Direct

Public Preview

When direct communication is available, allows clients to **establish a secure, direct connection** to the session host.



Apps & Desktops



Support for Azure Hibernation Public Preview

Citrix VDA for MacOS

Public Preview

- New VDA running on macOS with a delivery model like “Remote PC”
- Built on a robust foundation of HDX technologies.
- Offers all the rich feature sets that customers have come to expect from our Windows VDA
- Seamless integration with Desktop as a Service (DaaS) and Citrix Virtual Apps and Desktops (CVAD) architecture



VDA Upgrade Service

Proxy Support

Edit setting
VDA upgrade proxy configuration

Enable
The VDA Upgrade Agent will connect with the VDA Upgrade Service and the Azure Content Delivery Network (CDN) through the proxy defined in this setting.

Proxy address
Enter the proxy address or path to the PAC file

Proxy address example: `http://URL or IP:port*`
PAC file example: `http://URL or IP:port/path/filename.pac*`

Disable
The VDA Upgrade Agent will not route outbound traffic through any non-transparent proxies when connecting with the VDA Upgrade Service and the Azure Content Delivery Network (CDN) through the proxy defined in this setting.

- Use when VDA internet access is regulated through the use of proxies

Local File Share Support

Upgrade VDAs
JoseA_Multisession MC

Schedule

Preferences **Preview**

Components

Features

Summary

Preferences

Use Citrix provided CDN
Default setting that allows Citrix to download VDA from CDN. [Learn more](#)

Use local file share
Lets you specify a custom location from which to download the installer package. [Learn more](#)

File Path

File path example: `\\fileshare\name\folder\vdas.exe`

- In air-gapped environments, direct VDA to a local file share

Upgrade Fail-safe

Stop upgrade after the failure limit
Lets you control when an upgrade is stopped due to failure and how many VDAs are upgraded at once. [Learn more](#) **Preview**

Failure threshold
Specify how many VDAs can fail to upgrade before the entire upgrade process is stopped. Once the failure threshold is reached, the current upgrade batch will complete but the next batch will not begin.
 VDAs

Concurrency
Specify how many VDAs can be upgraded at one time in a batch. For example, if 20 machines are selected for upgrade and you set the Concurrency to 5, there will be 4 batches of upgrades, with 5 machines inside each batch.
 VDAs

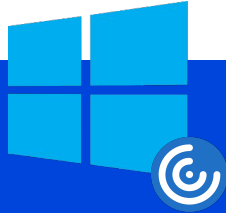
Cancel

- Manage the exit strategy during upgrade issues by setting concurrency levels and failure thresholds

...and much more!

citrix

Citrix Workspace App (CWA) - Desktop



CWA for Windows

- New Installer UI for Windows 11
- Support log-off on close
- Enhanced Domain Passthrough for SSO (Preview)
- Consolidating troubleshooting options in System Tray along with Send Feedback
- Visual accessibility improvements
- Relative Mouse 2.0
- TLS 1.3 (Preview)



CWA for Mac

- Support for extending to 5 monitors in fullscreen mode
- Support for H.265 video decoding (Preview)
- FIDO2 for On-prem
- TLS 1.3 (Preview)



CWA for Linux

- 32-bit cursor, all of the color combinations
- Copy/Paste between two virtual desktops
- Keyboard import modes
- Automatically extending VDA session into secondary monitors (Preview)
- Support for
 - DPI matching
 - Multi-touch gestures
 - IPv6 UDP with DTLS
 - IPv6 TCP with TLS
 - Arm64
- FIDO2 for on-prem

Citrix Workspace App (CWA) - Mobile



CWA for Android

- Support for External USB webcams (Preview)
- Improved Multitasking using Samsung Dex (Preview)
- Day 0 support for Android 14
- Accessibility support
- Support for External USB-based microphones
- Detect and Prevent Screenshot via UEM (Preview)
- Add multiple stores and push app settings via UEM (Preview)



CWA for iOS

- Day 0 for iOS 17
- External webcam support (Preview)
- Accessibility (Preview)
- Airprint (Preview)
- Support for PIV/CCID Smart Cards (Preview)
- Interactive widget
- Add multiple stores and push app settings via UEM



CWA for Chrome OS/HTML5

- Zoom Optimisation
- Support for network printing
- Graphics improvements
- Gesture enhancements on Touch devices
- Improved virtual app and desktop launch experience
- Service continuity for HTML5
- Progressive web app for HTML5
- Support for QUIC for HTML5

Custom Workspace URL

- Previously, all Workspace customers had to use *.cloud.com
- Enable use of company-branded domain names that are unique and easy to remember

Multiple Workspace URLs

- Use up to 10 URLs within Citrix Workspace
- Leverage branding, authentication, and resource filtering across each separate URL

The screenshot shows the Citrix Workspace Configuration dashboard. The left sidebar contains a navigation menu with 'Workspace Configuration' highlighted. A red arrow points to this menu item. The main content area displays four cards: 'Library Offerings' (0), 'Resource Location' (1), 'Domains' (0), and 'Notifications' (0). Below these cards are buttons for 'View Library', 'Edit or Add New', 'Add New', and 'View All'. At the bottom left, there is a 'Request Demo' button and a 'Learn more' link. The bottom of the dashboard shows 'Available Services (18)' with icons for Analytics, App Delivery and Security, Application Delivery Management, Citrix Analytics Daily Profile, and DaaS.

The screenshot shows the 'Workspace Configuration' page in the Citrix Workspace Configuration dashboard. The page title is 'Workspace Configuration' and it includes sub-navigation for 'Access', 'Authentication', 'Customize', 'Service Integrations', 'Sites', 'Service Continuity', and 'App Configuration'. The main content area is titled 'Workspace URL' and includes the text: 'These are the URLs your subscriber will use to access their Workspace from their browser. Customize the URLs by editing them.' An 'Edit' button is located in the top right corner of this section. Below the text is a table with the following data:

URL	Theme	Custom Domain	Status
https://wsmultirmain.cloudburrito.com	Default 1 theme	wspsmultirmain.xaaad.com	Enabled
https://wsmultir2.cloudburrito.com	1 theme		Enabled
https://wsmultir3.cloudburrito.com	1 theme		Enabled
https://wsmultir15.cloudburrito.com	1 theme		Enabled

Below the table, there is a section for 'Custom Workspace URL (Tech Preview)' with the text: 'Use a URL that you own to access workspace in addition to your .cloudburrito.com URL.' and a link: <https://wspsmultirmain.xaaad.com>. An 'Edit' button and a toggle switch are located to the right of this section. The bottom of the page shows 'External Connectivity'.

User & Endpoint

Monitoring

Apps & Desktops

End-to-End Citrix User & Session Monitoring

Peripherals

Client Platforms

Unified Communications

Delivery Models

Operating Systems

Delivery Platforms



Director & Monitor

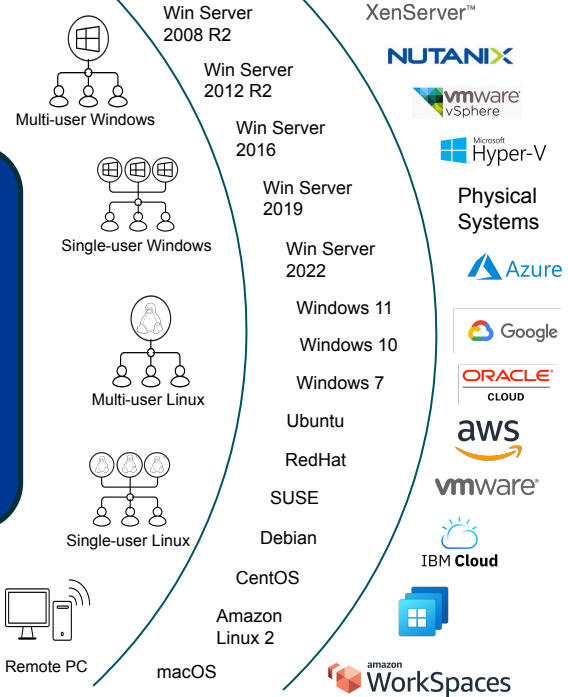
- Real-time triage
- Monitor sessions
- Remediate issues

Analytics

- Proactive monitoring
- Security & compliance
- Report & Data Export

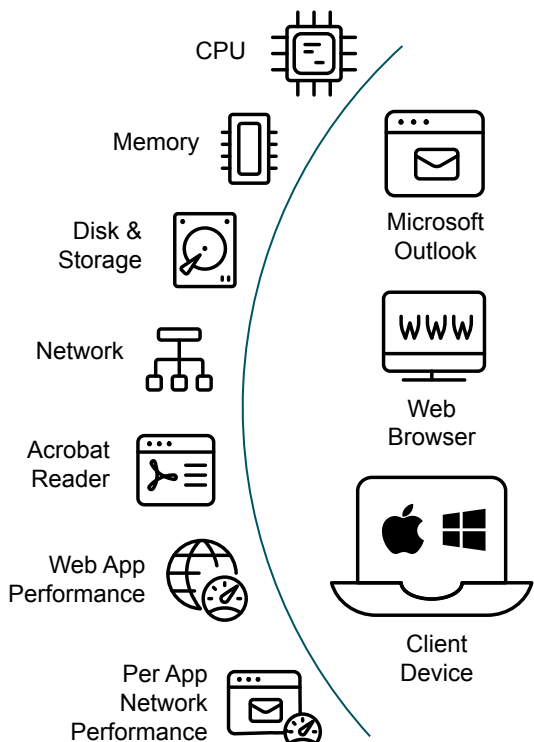
Netscaler Console

- HDX Insight
- Gateway Insight
- Authentication Insights



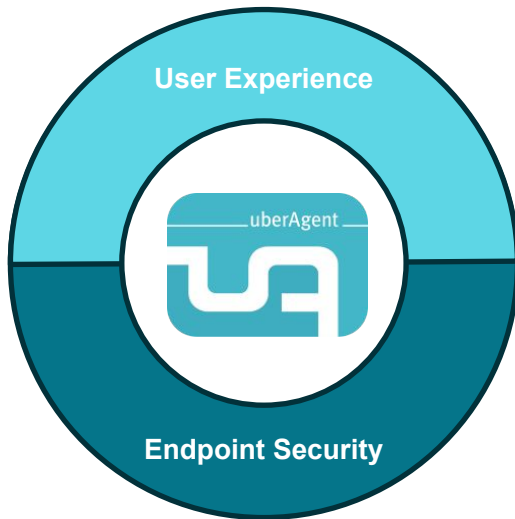
uberAgent – On-Premises and customer operated

Native Applications & System Performance

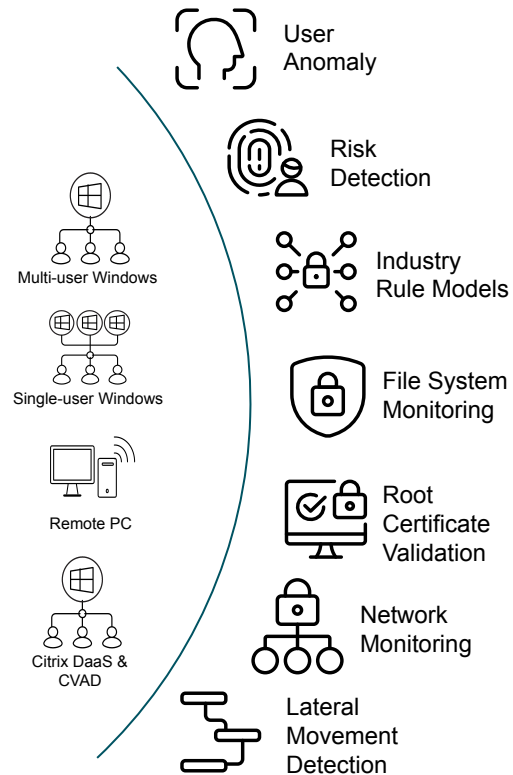


Full Stack Network Monitoring

Expanding visibility into physical endpoints, installed applications and System KPI's



Enhanced Anomaly Detection



What is uberAgent

Cutting-edge EUC monitoring solution

UXM - User Experience Monitoring

ESA - Endpoint Security Analytics

Flexible backend platform support

Highly efficient & powerful agent

