



How to use the different AI services from Microsoft to your advantage!



Session Goals

- Acknowledge change/Educate
- Inspire

Questions? Yes please





Gerjon Kunst

RawWorks | Innovation Officer | Citrix CTA | MCT



AGENDA



PART 01

What is AI

PART 02

State of AI

PART 03

AI in the Microsoft world

PART 04

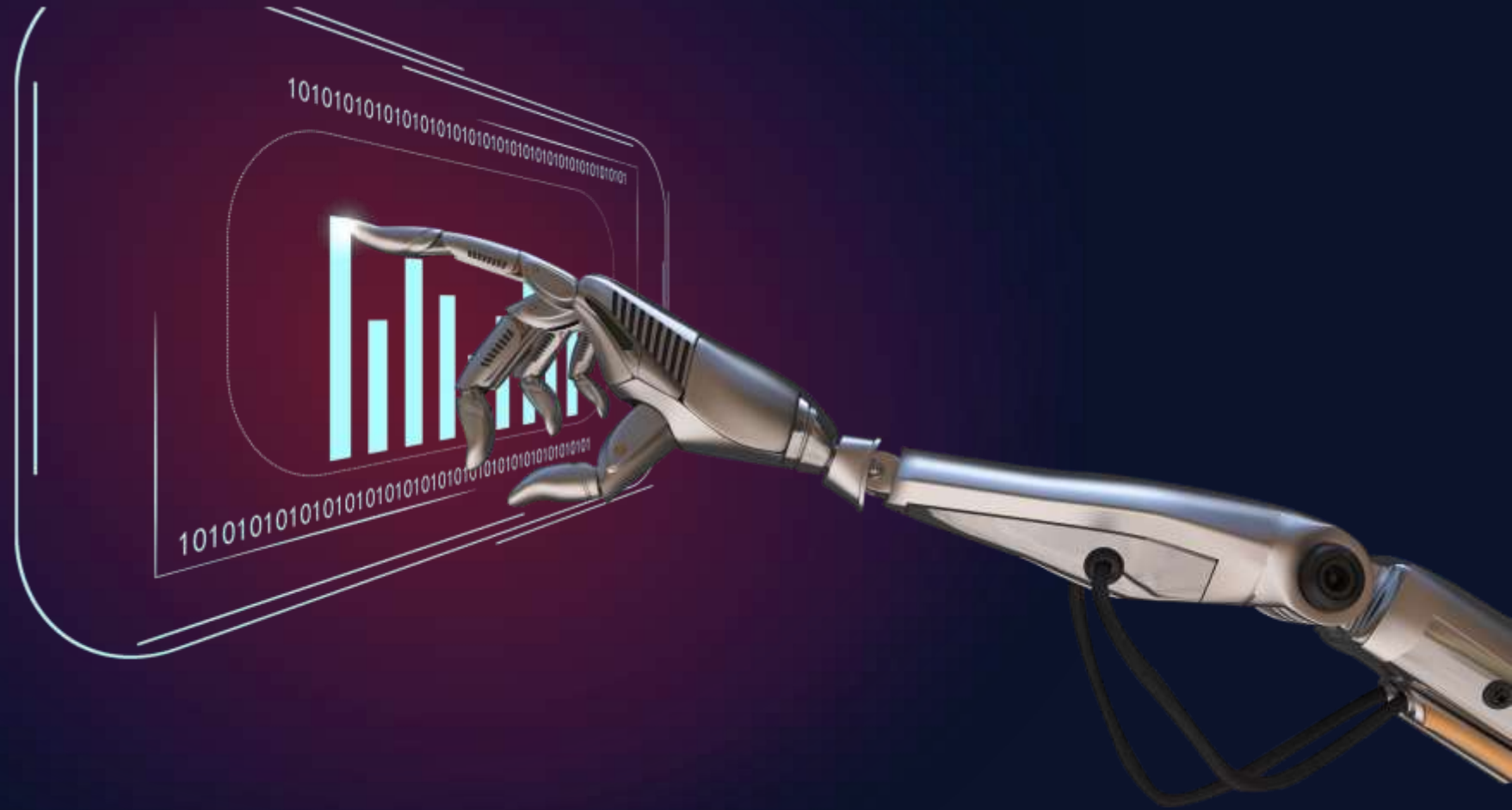
Examples

PART 05

Wrap Up

PART 01

What is AI



WHAT IS AI



Copilot

Artificial intelligence (AI) refers to computer systems capable of performing complex tasks that historically only a human could do, such as **reasoning, making decisions, or solving problems**. It encompasses a wide variety of technologies, including **machine learning, deep learning, and natural language processing (NLP)**. When most people use the term AI today, they're often referring to a suite of machine learning-powered technologies that enable machines to perform tasks like **generating written content, steering a car, or analyzing data** ¹.

In simpler terms, AI is the theory and development of computer systems that can perform tasks that historically required human intelligence, such as **recognizing speech, making decisions, and identifying patterns**. It's like teaching computers to think and learn like humans, albeit in specialized ways.

Here are some common examples of AI in use today:

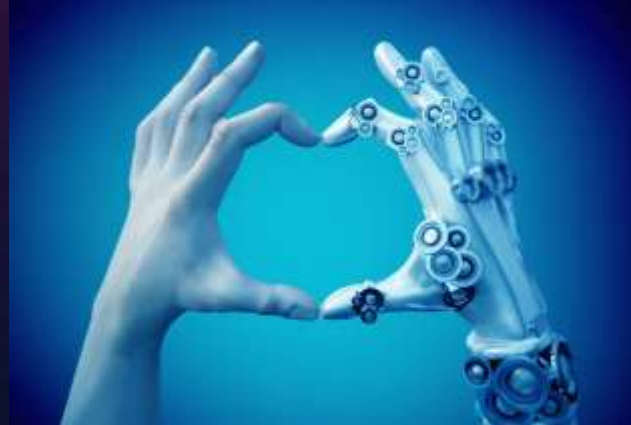
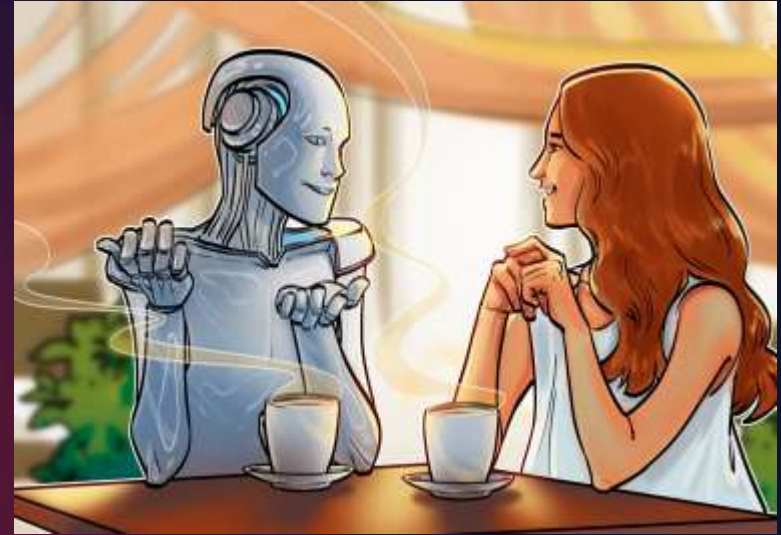
1. **ChatGPT**: Uses large language models (LLMs) to generate text in response to questions or comments posed to it.
2. **Machine learning algorithms**: These algorithms are trained on data sets to create models that allow computer systems to perform tasks like **making song recommendations, identifying optimal travel routes, or translating text between languages**.



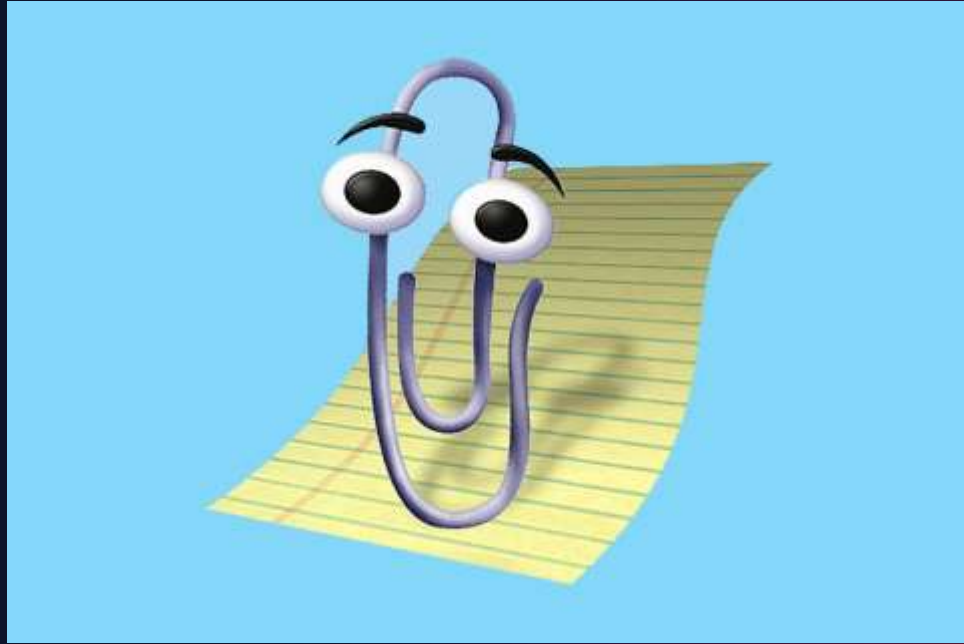
While we're not quite at the level of humanoid robots from science fiction, AI is already woven into our daily lives, powering services and goods we use every day. Whether it's the chatbot assisting with customer support or the recommendation engine suggesting your next favorite show, AI is here to stay and continues to evolve ¹.

Meer informatie ¹ [1 coursea.org](https://www.coursera.org) ² [2 britannica.com](https://www.britannica.com) ³ [3 ibm.com](https://www.ibm.com) ⁴ [4 media.gettyimages.com](https://www.media.gettyimages.com)

Whats the first thing that comes up when you think of Artificial Intelligence?_____



Whats the first thing that comes up when you think of Artificial Intelligence?_____

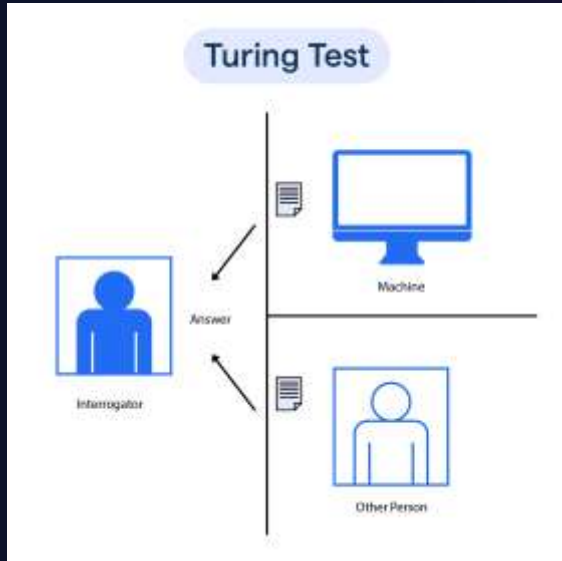




THE HISTORY OF AI

History of AI

The Inception and Early Years (1950s - 1970s)



AI has been around for a while



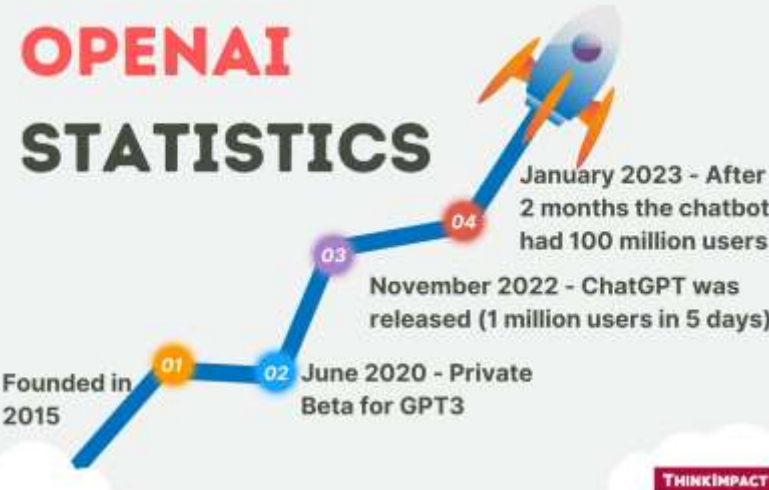
History of AI (1980 – 2023)



OpenAI

GPT-3, an autoregressive language model with 175 billion parameters

OPENAI STATISTICS



- 01 Founded in 2015
- 02 June 2020 - Private Beta for GPT3
- 03 November 2022 - ChatGPT was released (1 million users in 5 days)
- 04 January 2023 - After 2 months the chatbot had 100 million users

THINKIMPACT



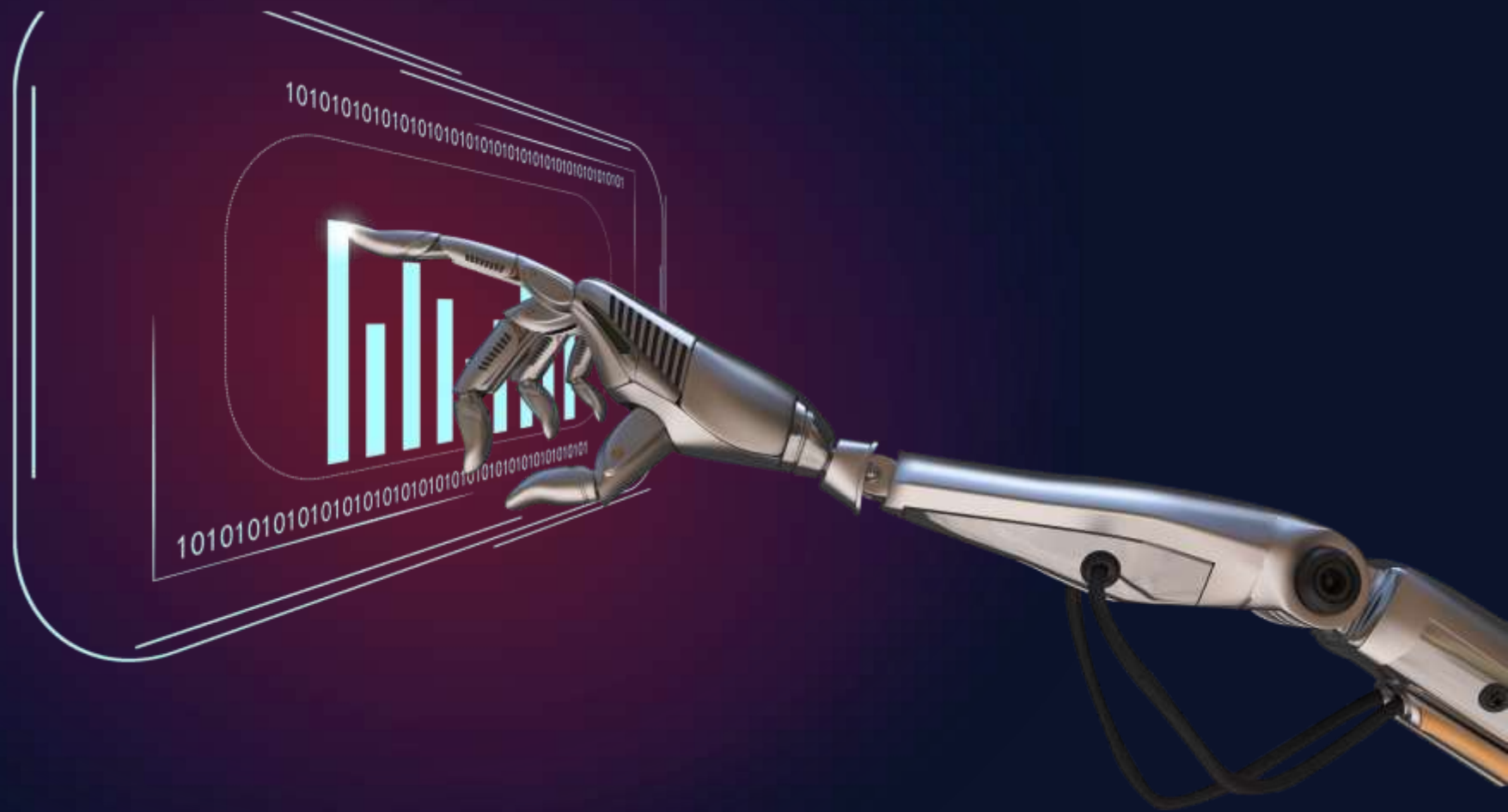


AI Video 1 year ago

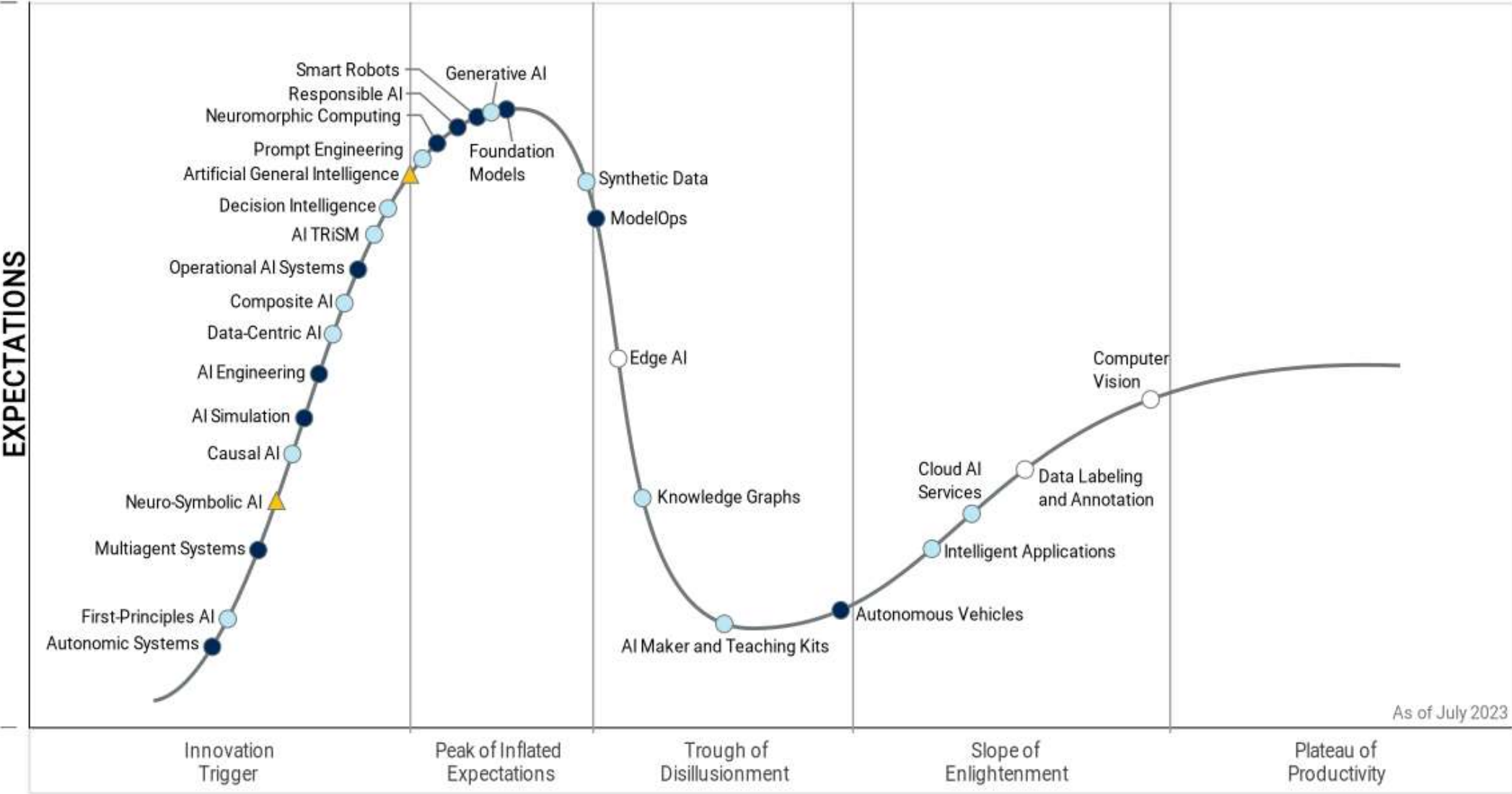


PART 02

State of AI




Hype Cycle for Artificial Intelligence, 2023



Plateau will be reached: ○ <2 yrs. ● 2-5 yrs. ● 5-10 yrs. ▲ >10 yrs. ⊗ Obsolete before plateau

Time it took to reach **100 million users** worldwide

Created by  genuine impact



Source: PwC Analysis

More charts: genuineimpact.substack.com

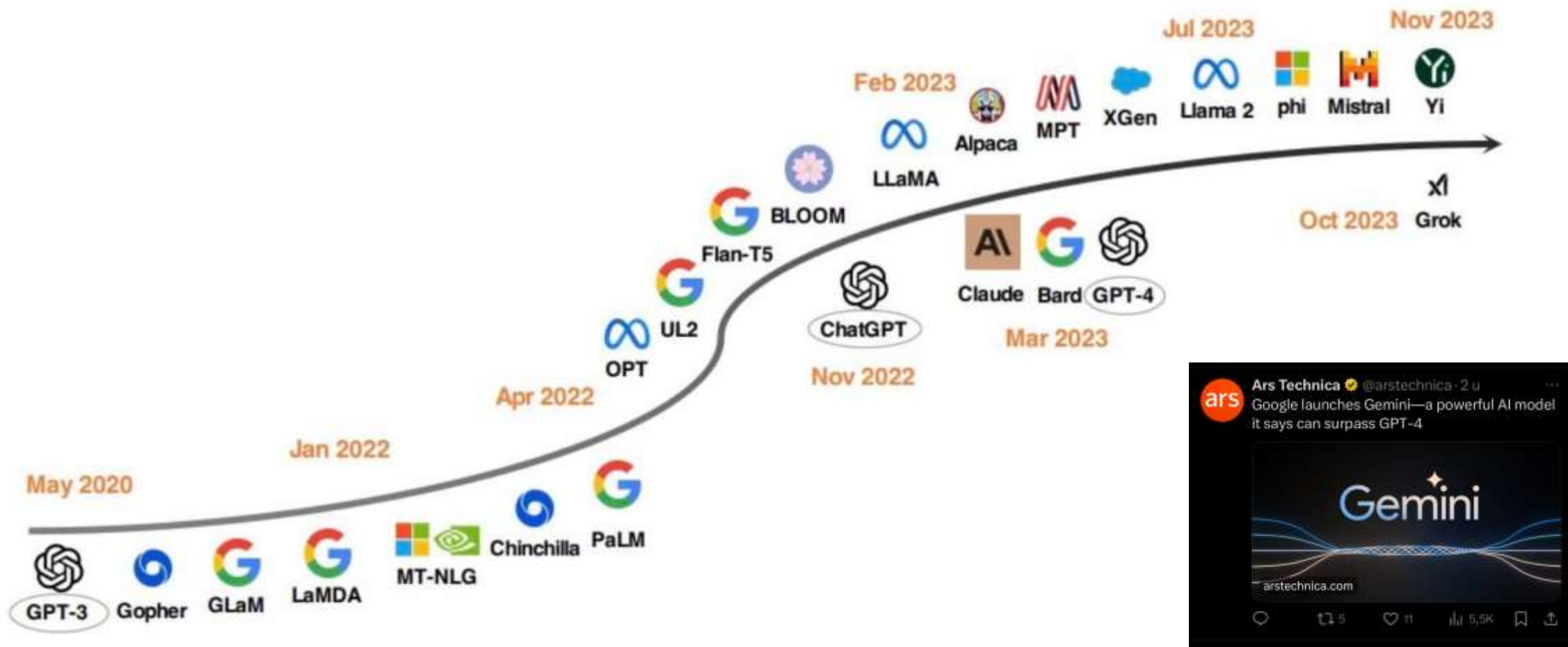
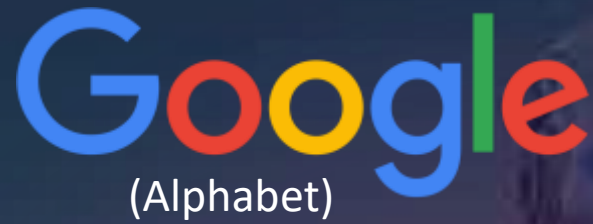


Figure 3: LLM development timeline. The models below the arrow are closed-source while those above the arrow are open-source.



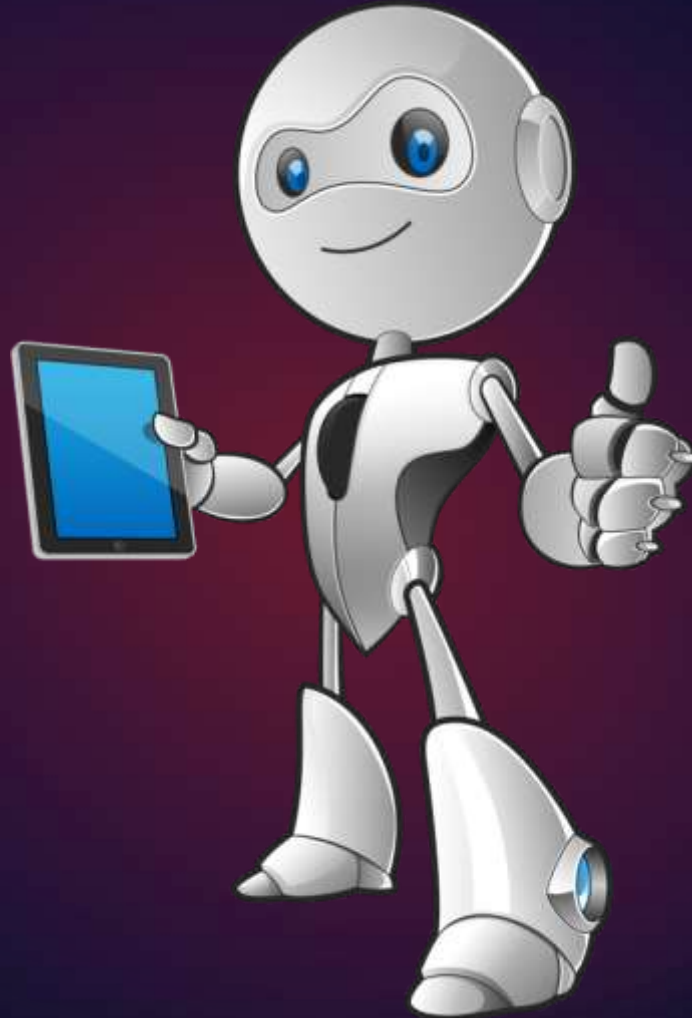
- Mobileye
- Palantir
- Dynatrace
- UiPath
- C3 AI
- SentinelOne
- Upstart
- Bayonet AI
- Darktrace
- Aurora Innovation

THE BIG PLAYERS



START YOUR JOURNEY

- ChatGPT/Bard/..
- Dall-E/Midjourney/picsart
- [152 Best AI Tools Of 2023 \(synthesia.io\)](#)
- Business application integrations
- Custom Large Language Model (LLM) bots

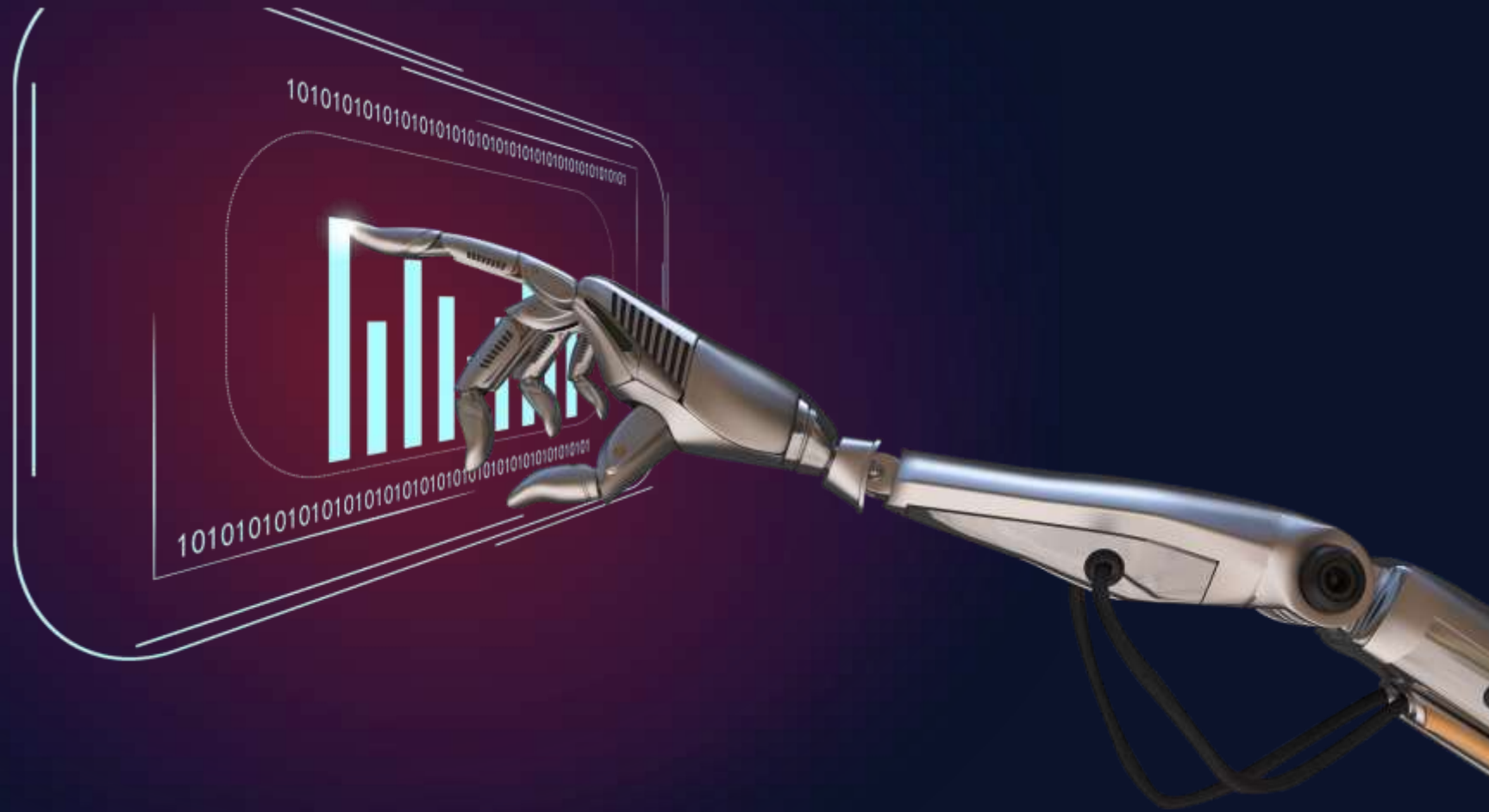


Microsoft based

- Microsoft Co-Pilots
 - GitHub
 - Azure
 - Microsoft 365
 - Power Platform
 - Windows/Edge
 - Security
- Designer
- BYOB
 - Github repo's
 - Custom Co-pilot
 - Azure OpenAI

PART 03

AI in the Microsoft world



AI IN THE MICROSOFT WORLD

news.microsoft.com/source/features/ai/microsoft-approach-to-ai/

At Microsoft, we believe artificial intelligence (AI) is the defining technology of our time.

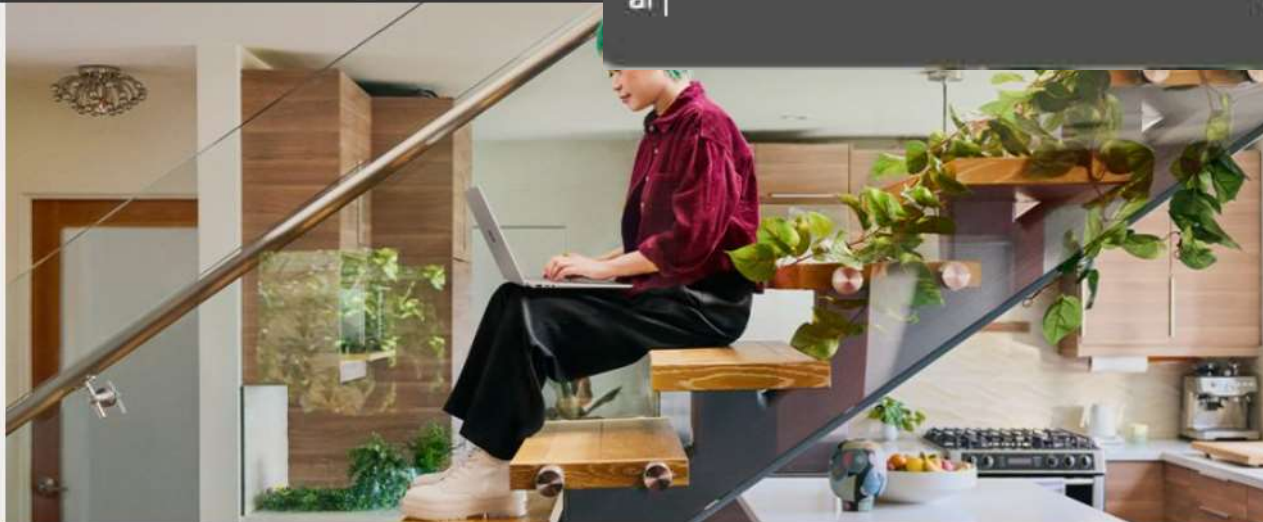
At Microsoft, we believe artificial intelligence (AI) is the defining technology of our time.

We have been on the forefront of cutting-edge research in AI and integrating these powerful, innovative AI technologies into our products and services to help customers do more.

[Microsoft AI](#), powered by [Azure](#), provides billions of intelligent experiences every day in Windows, Xbox, Microsoft 365, Teams, [Azure AI](#), Power Platform, Dynamics 365 and Microsoft Defender.

https://news.microsoft.com/ignite-2023-book-of-news/

Microsoft / Stories



ai |

1/207

Download
Visual Assets

English >



VISCHER

Fiercely independent. Wholly collegiate.

We are an influential, innovative Swiss law firm, dedicated to providing effective legal solutions for Swiss and international clients, covering business, tax and regulatory matters.

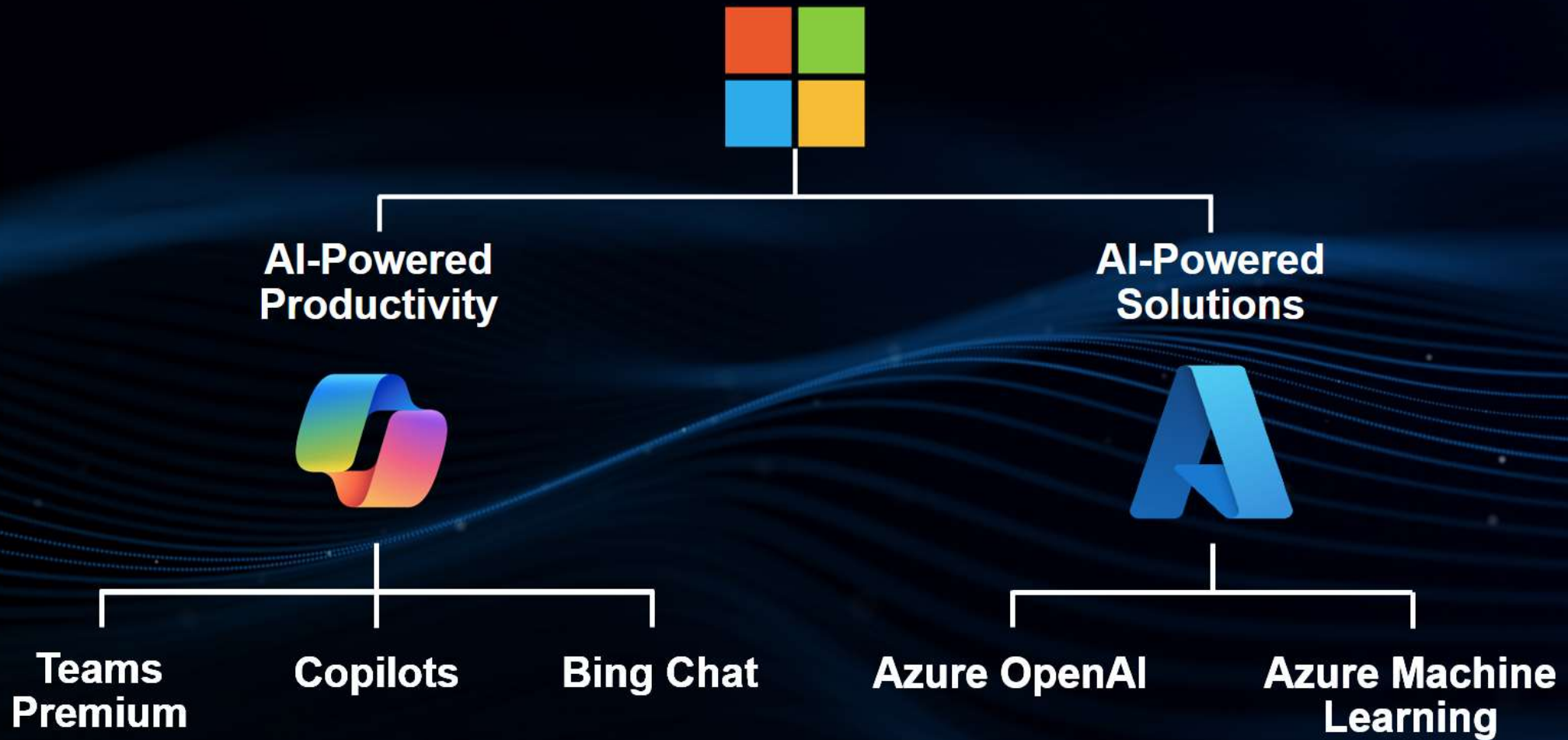
Only the use of "**Copilot for Microsoft 365**" or "**Azure OpenAI Service**" offers contractual protection in terms of data protection and confidentiality for companies. These services are obtained under business contracts such as the aforementioned MCA and are subject to the aforementioned Microsoft DPA. In addition, these services offer the option of concluding additional agreements for companies with special requirements, such as professional secrecy (e.g. lawyers, doctors, banks).

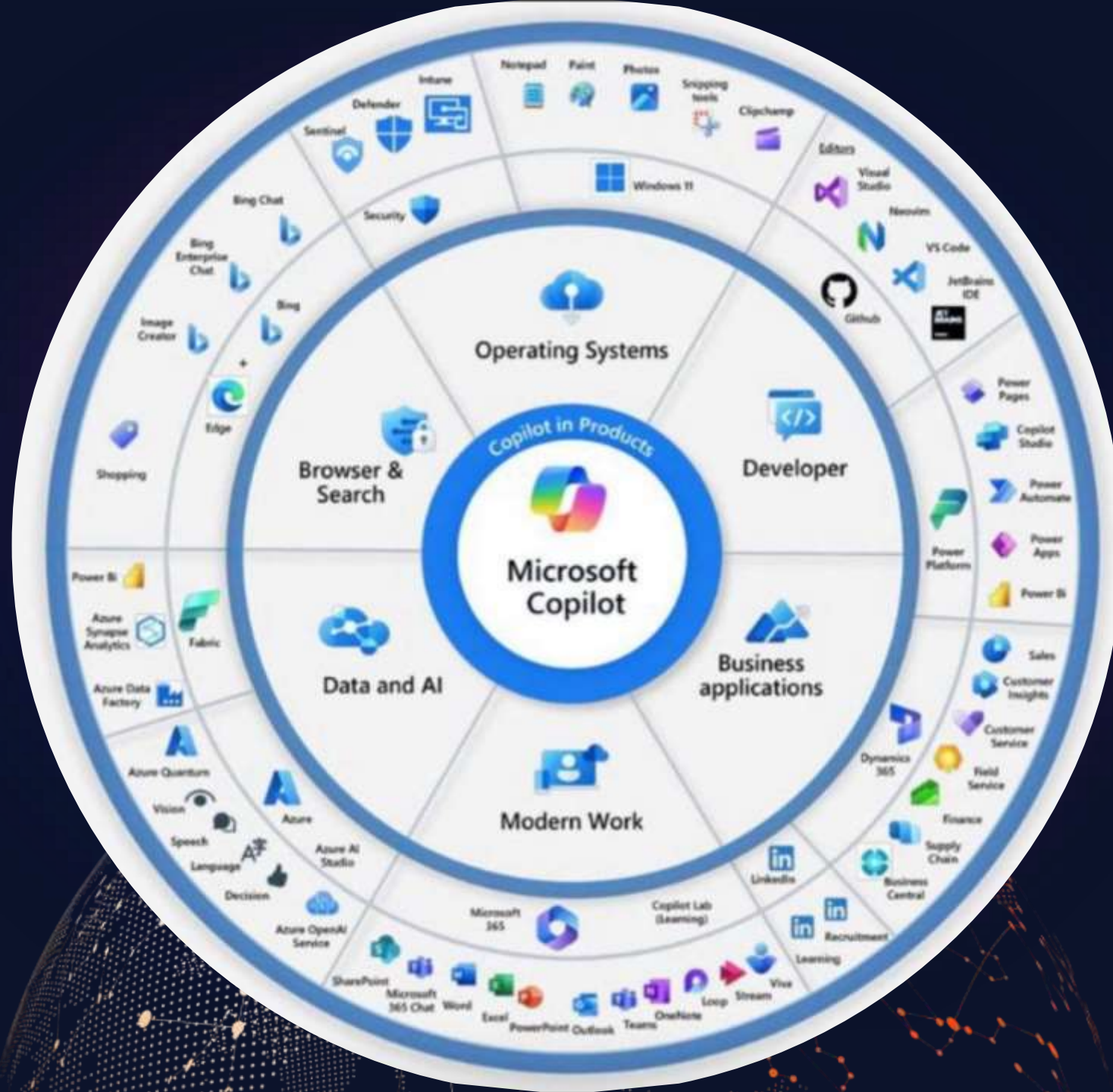
What makes Microsoft OpenAI/Copilot different from OpenAI

- **Data Security**
- **Control**
- **Risk of Intellectual Property (IP) Exposure**
- **Customization**
- **Private Access**
- **Compliance and Governance**
- **Fine-tuning on Proprietary Data**
- **Integration with Azure Services**
- **Futureproofing**

Note: OpenAI released Chat GPT team that counters some of these issues

Microsoft A.I. Landscape







Microsoft A.I. Landscape

Copilot

Copilot for Dynamics365
Copilot for Microsoft 365
Copilot for Azure
Copilot in Bing
Copilot in Powerplatform
Copilot in Windows
Copilot in Github

Extend Copilot

Low code development

And/or

Plugins, message
extentions or connectors

Build your own Copilot

Pre-built Azure AI
services through
**Microsoft Copilot
Studio**

Azure AI services
through **Azure AI studio**

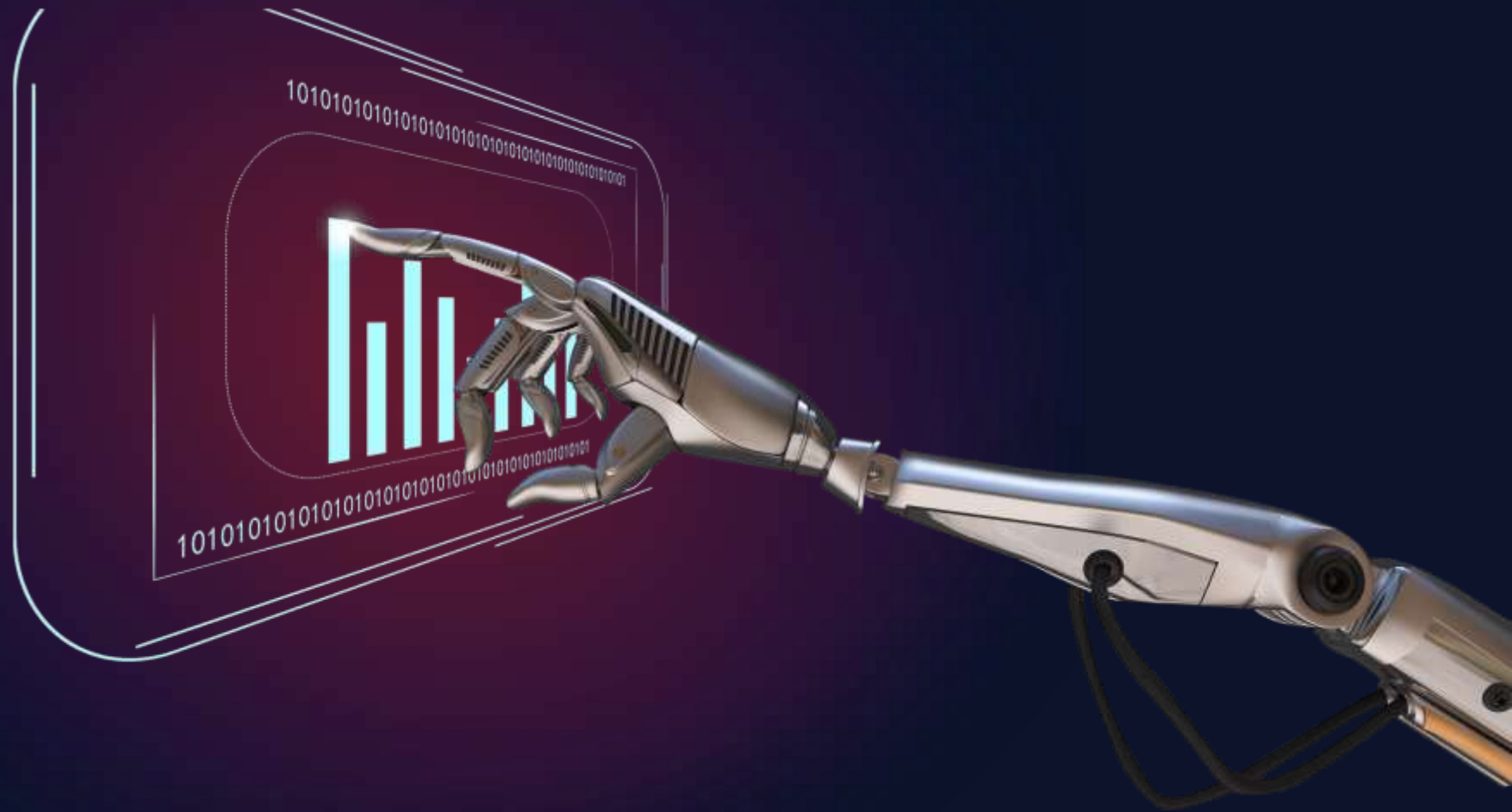
Start from scratch

Azure AI services etc.
based on High code

Or running on own
infrastructure

PART 04

Examples



Show time





Microsoft A.I. Landscape

Copilot

- Copilot for Dynamics365
- Copilot for Microsoft 365
- Copilot for Azure
- Copilot in Bing
- Copilot in Powerplatform
- Copilot in Windows
- Copilot in Github

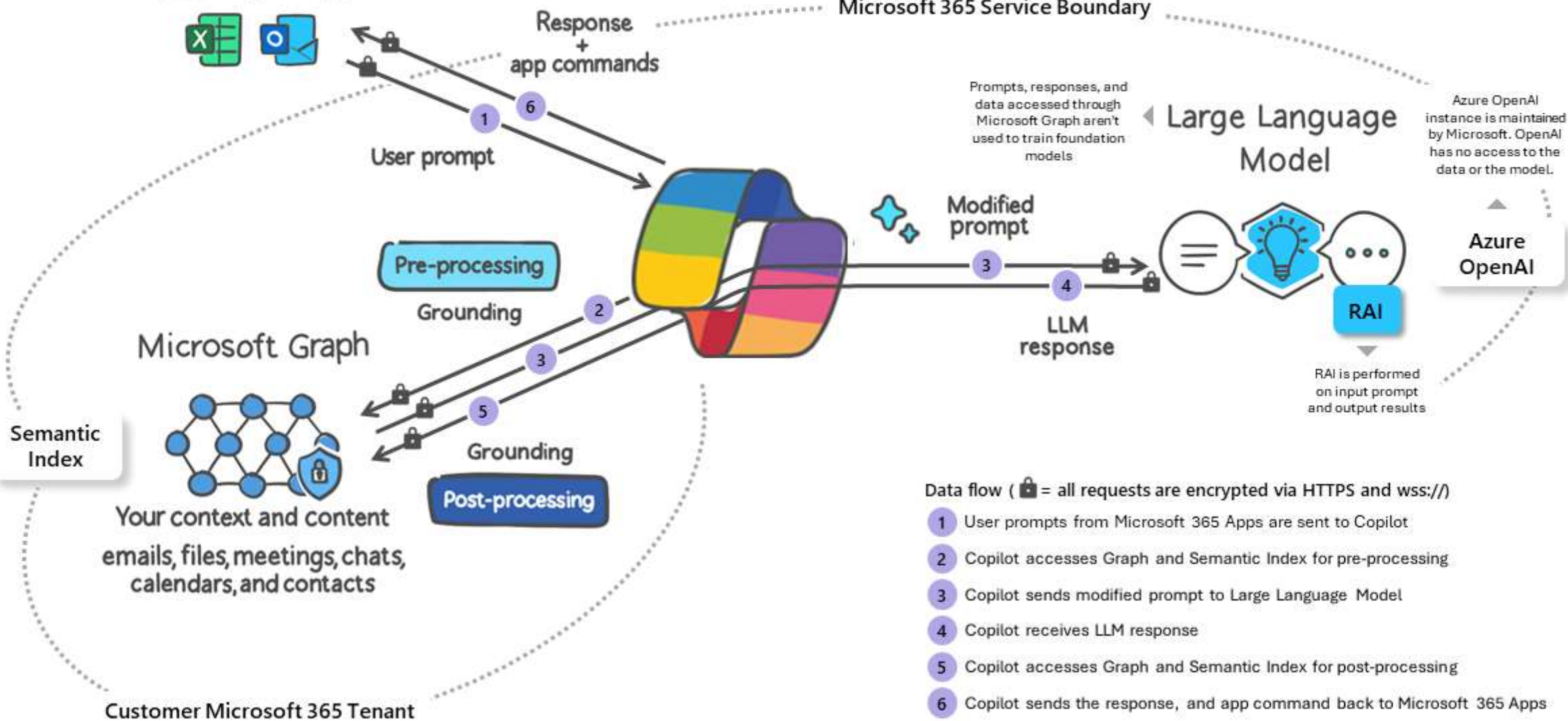


Microsoft 365 Apps



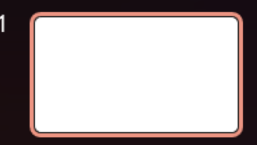
Microsoft 365 Copilot

Microsoft 365 Service Boundary



Customer Microsoft 365 Tenant

Clipboard Dia's Lettertype Alinea Tekenen Bewerken Dicteren Vertrouwelijkheid Invoegtoepassingen Designer Copilot



Klikken om een titel toe te voegen

Klikken om een ondertitel toe te voegen

Copilot

I can chat, respond to questions, and help you draft this presentation.

Here are some things you can try...

- Create a presentation...
- Create presentation from file...
- Add a slide about...

Create a presentation about the Mars perseverance rover mission. Make it animated and use 8 slides

98/2000



Bestand Start Invoegen Tekenen Ontwerpen Overgangen Animaties Diavoorstelling Opnemen Controleren **Beeld** Invoegtoepassingen Help

Normaal Overzichtswegave Diasorteerder Notitiepagina Leesweergave
 Weergaven voor presentator

Diamodel Hand-outmodel Notitiemodel
 Modelweergaven

Lijnaal Rasterlijnen Hulplijnen Notities
 Weergeven

In-/uitzoomen Aanpassen aan venster
 In-/uitzoomen

Kleur Grijswaarde Zwart-wit
 Kleur/grijswaarde

Nieuw venster Alle vensters Trapsgewijs Splitsing verplaatsen
 Venster

Ander venster
 Macro's

The Red Planet Beckons

1 ★

Perseverance Rover Overview

- Launched on July 30, 2020
- Arrived on Mars on February 18, 2021
- Landed in Jezero Crater
- Largest and most advanced rover ever sent to Mars

2

Jezero Crater

- Landing site for Perseverance Rover
- Thought to be an ancient lakebed
- Contains intriguing geologic features

3

The Search for Life

- Perseverance will search for signs of ancient life
- It will collect rock samples for return to Earth
- Mars 2020 Mission is first step in Mars Sample Return campaign

4

Ingenuity Helicopter

- First powered flight on another planet
- Paves way for future aerial exploration of Mars

5

Scientific Instruments

- Mastcam Z camera
- SuperCam laser and spectrometer
- MOXIE experiment to produce oxygen from Martian atmosphere

6

International Collaboration

- NASA collaboration with international partners
- European Space Agency provided Mars Trace Gas Orbiter
- Four partners provided scientific instruments

7

The Future of Mars Exploration

- Mars Sample Return campaign
- Human missions planned for the 2030s
- Goal of establishing a sustainable human presence on Mars

8



1



Klikken om een titel toe te voegen

Klikken om een ondertitel toe te voegen

Copilot

I can chat, respond to questions, and help you draft this presentation.

Here are some things you can try...

- Create a presentation...
- Create presentation from file...
- Add a slide about...

Create presentation from file `ai-office-marketing.docx`

30/2000

De Toekomst van Werkplezier met de 20-urige Werkweek

1

Agenda

2

Introductie

3

Call to Action

4

Welkom bij RawWorks

5

Wat is de AI Office?

6

Voordelen voor gebruikers

8

Veiligheid en Toegankelijkheid

9

Testimonials of Gebruikersverhalen

10

Fase 1: Digital Awareness

11

Fase 2: Foundational Digitalization

12

Fase 3: Digitale Efficiëntie

13

Fase 4: Ge...

14

Fase 5: Volwassen Digitale Werkomgeving

15

Fase 6: Continue Optimalisatie

16

Microsoft Co-Pilot en AI Office

17

Stimme Werkproces met AI Office

18

Microsoft Copilot: De Kracht van Stemme Code

19

De Synergie: Werkelijk Slimme Werkomgeving

20

Hoe Profit...

21

Een Blik op de Toekomst

22

Ervaar de Revolutie

23

Conclusie

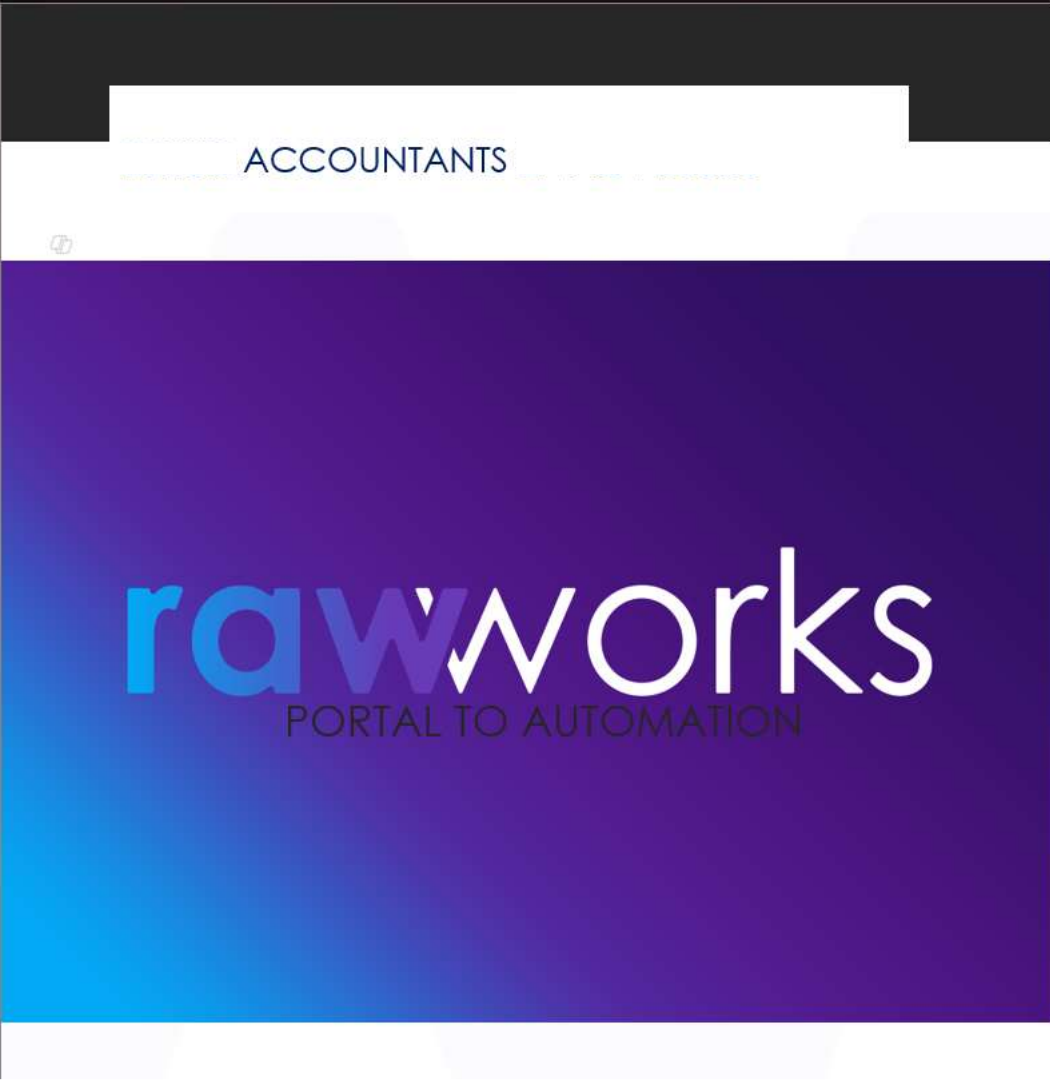
24

Lettertype: Futura PT Light, 12, A^{*}, A^{*}, Aa, A^o

Alinea: [Icons for alignment and indentation]

Stijlen: Standaard, Geen afstand, 1. KOP 1, 1.1 KOP 2, 1.1.1. KOP 3

Verwerken: Zoeken, Vervangen, Selecteren, Bewerken, Dicteren, Spraak, Vertrouwelijkheid, Invoegtoepassingen, Editor, Copilot



Copilot

Here's a summary of the document:

Main ideas:

The document's purpose and main points: The document describes the design of a new IT environment for which aims to make the IT environment scalable, cost-efficient, and cloud-based. The document covers the setup of each component, from the workplace to the applications to the data center.

The project's background and goals: The project is motivated by the expiration of the current Citrix environment, which provides virtual workplaces for the end-users. The project intends to explore and implement a serverless computing solution, where applications and data are accessed online or installed locally on the laptops. The project's deadline is 15 November 2021, and the expected results include the phasing out of the Citrix environment, the migration of software and data to the cloud, and the transition to the modern workplace.

Summarize this doc | Is there a call to action?

Ask questions and work with this document

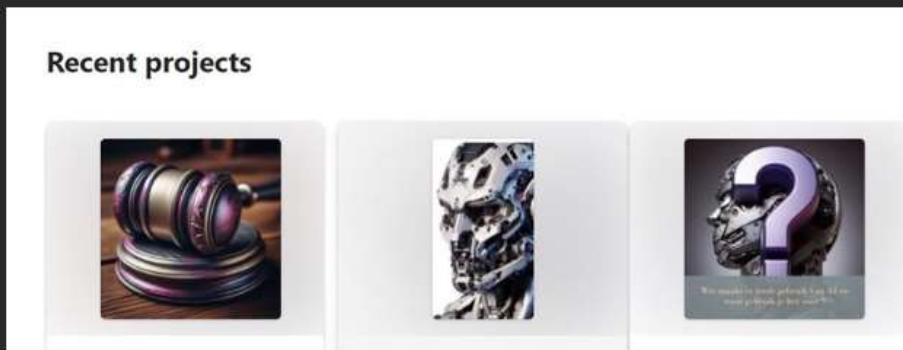
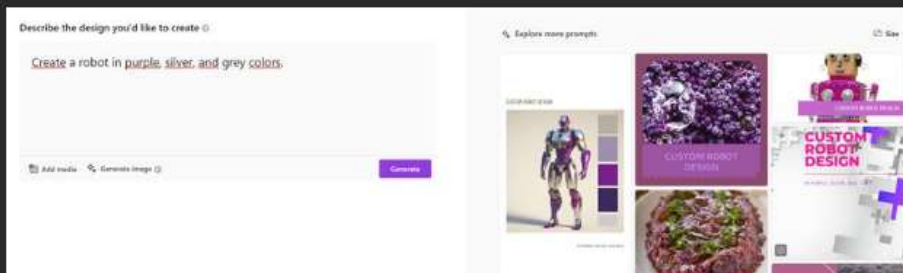
0/2000



Michael Jonker | RawWorks Yesterday 5:18 PM



ik moet hem nog afmaken hoor, dus als je nieuwe dingen hebt, veel plaatjes zijn gemaakt met Microsoft Designer 😊



Kan ik ook zo'n chatbot snel bouwen in Azure met mijn MSDN credits?

Yesterday 5:24 PM

Zeker!

Openai in je tenant neerzetten inloggen op de portal en gaan

En anders mag je rawgpt wel lenen

Yesterday 5:39 PM

Die kunnen we zo wat anders leren 😊

Type a message



Copilot

Prompts make it easy to get the info you need.

🔒 **It's your Copilot** ⓘ
Other people in the chat can't see this conversation.

Highlights from the past day

Copilot 1/25

1/25 7:37 PM - 1/25 7:50 PM

Gerjon Kunst and **Michael Jonker** discussed the benefits and limitations of using AI copilot for creating presentations.

Key takeaways

- **Gerjon Kunst** shared their achievement in creating a presentation using AI in just 3 minutes. ¹
- **Michael Jonker** suggested that the perfect PowerPoint still requires some manual work or better commands. ²
- **Gerjon Kunst** and **Michael Jonker** discussed the potential benefits of using AI for certain functions and tasks. ³

AI-generated content may be incorrect.



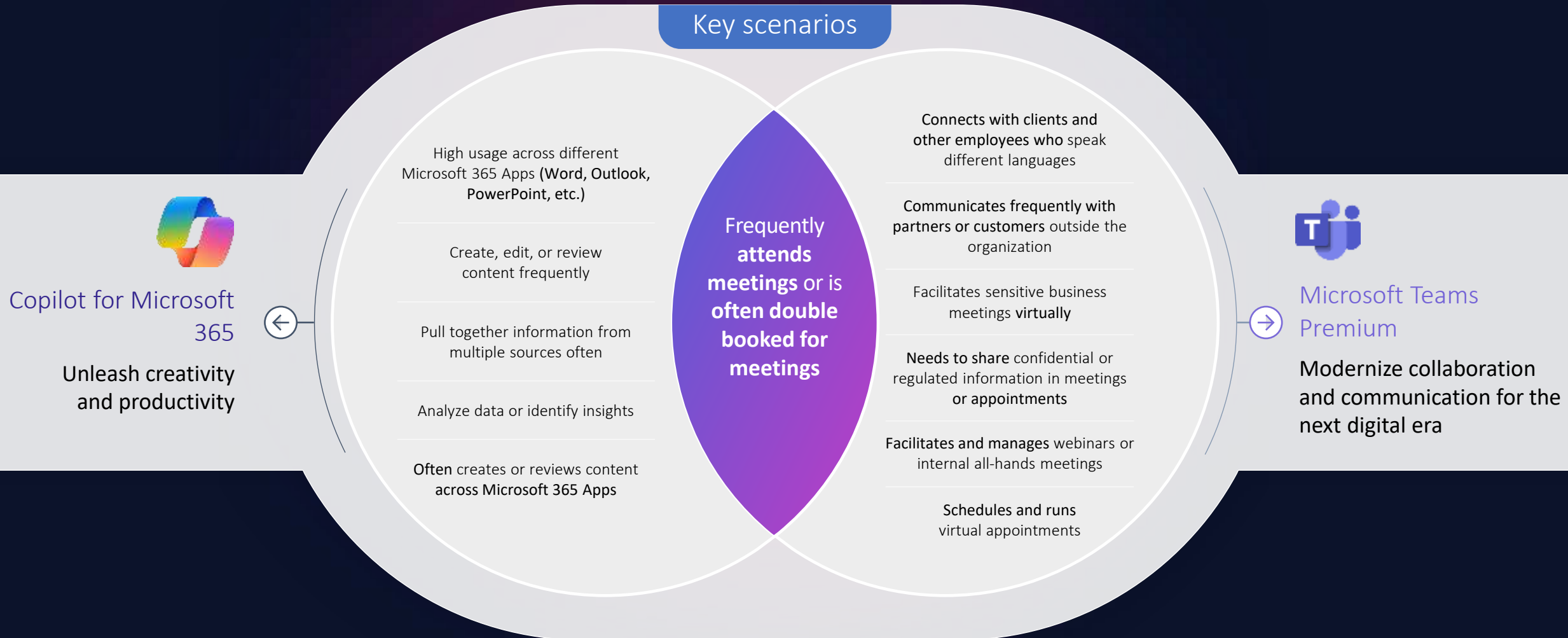
Highlights from the past day

Ask a question about this chat

🔍 More prompts



Teams premium (just so you know)



... [Window Controls]

View [Security] [CC] People Chat Reactions Apps More Camera Mic Share **Leave**

Pavan Li (PEIWEN LI)

Tomi Ogundipe

Andy Beatman ...

Pavan L: Thus learning and working in the native language. ...

Pavan L: Now even if I use Chinese, you can understand what I'm saying.

Other Copilots





Azure services

- [Create a resource](#)
- Subscriptions
- Resource groups
- Azure AI services
- Microsoft Entra ID
- Azure AI services
- Storage accounts
- Virtual machines
- Billing access control (IAM)
- More services

Resources

Recent Favorite

Name	Type	Last Viewed
MSDN-platforms-MCT	Subscription	a month ago
gerjon-ai-services	Azure AI services multi-service account	a month ago
aigk-vision2	Computer vision	a month ago
AI-102-US	Resource group	a month ago
Betalen naar gebruik	Subscription	a month ago
Betalen naar gebruik (AI)	Subscription	a month ago
nasbackupgk	Storage account	a month ago
Teslamate-Docker	Virtual machine	2 months ago
PiHole	Virtual machine	2 months ago
Visual Studio Enterprise-abonnement-RAW	Subscription	2 months ago
PiHole	Resource group	2 months ago
B2C	Resource group	2 months ago

Azure services

Create a resource
 Subscriptions
 Resource groups
 Azure AI services
 Microsoft Entra ID
 Azure AI services
 Storage accounts
 Virtual machines
 Billing access control (IAM)
 More services

Resources

Recent Favorite

Name	Type	Last Viewed
MSDN-platforms-MCT	Subscription	a month ago
gerjon-ai-services	Azure AI services multi-service account	a month ago
aigk-vision2	Computer vision	a month ago
AI-102-US	Resource group	a month ago
Betalen naar gebruik	Subscription	a month ago
Betalen naar gebruik (AI)	Subscription	a month ago
nasbackupgk	Storage account	a month ago
Teslamate-Docker	Virtual machine	2 months ago
PiHole	Virtual machine	2 months ago

Copilot
Preview

Hello Gerjon, how can I help?

I want to ...

0 / 500

Hello Gerjon, how can I help?



can you give me tips to improve my secure score?

To improve your Azure Secure Score, you can follow these steps:

1. Use the Azure Security Benchmark security posture management strategy. This includes Azure security best practices that can help enhance your Secure Score.
2. Utilize the Secure Score feature in Microsoft Defender for Cloud. This feature assesses the most important security information in Azure for a wide variety of assets. This assessment can be your starting point on posture management.
3. Supplement the Secure Score feature with custom Azure policies and other mechanisms as needed.
4. Set up a regular cadence, typically monthly, to review Azure Secure Score and plan initiatives with specific improvement goals. You can increase the frequency as needed.

For more detailed information, you can refer to the following resources:

- [Azure security best practices](#)
- [Monitor and maintain Microsoft 365 Business Premium and Defender for Business - Security tasks](#)
- [Microsoft Secure Score for Devices - Improve your security configuration](#)
- [Top 12 tasks for security teams to support working from home](#)

What is Azure Security Benchmark?

How can I use Microsoft Defender for Cloud?

What are Azure policies?

I want to ...

0 / 500





Hello Gerjon, how can I help?



check cost management for vm usage

You're currently in scope: **MSDN-platforms**

You have €10.36 in charges for the Virtual Machines category from January 01, 2024, to January 13, 2024. Here is a breakdown of the charges grouped by resource ID:

Resource ID	Charges	% of Total Charges
microsoft.compute/virtualmachines/unifi	€5.97	57.66%
microsoft.compute/virtualmachines/teslamate-docker	€2.97	28.67%
microsoft.compute/virtualmachines/pihole	€1.42	13.71%

Please note that these charges do not include any credits or taxes. Let me know if there is anything else I can assist you with.

For information about a different scope, type "**Change cost management scope**", select a new scope, then type your

| want to ...

0 / 500



create an azure cli script that creates a cosmos DB in west europe on the cheapest subscription

Sure, here are the Azure CLI commands to create a Cosmos DB in West Europe on the cheapest subscription:

1. Create a new Cosmos DB account with specified configurations:

```
az cosmosdb create --name $cosmosDBName --resource-group $resourceGroup --kind GlobalDocumentDB --locations regionName=WestEurope failoverPriority=0 isZoneRedundant=False --default-consistency-level Eventual --enable-multiple-write-locations true --enable-automatic-failover true
```

2. Update the default consistency level for the Cosmos DB account

```
az cosmosdb update --name $cosmosDBName --resource-group $resourceGroup --default-consistency-level Eventual
```

Please replace `$cosmosDBName` and `$resourceGroup` with your Cosmos DB name and resource group name respectively.

Remember, you need to have the Azure CLI installed and be logged in to your Azure account to run these commands.

AI-generated content may be incorrect





AI pair programming is here.

75% more fulfilled

55%
faster coding

```
runtime.go JS days_between_da
9 // Get average runtime of
10 func averageRuntimeInSeco
11     var totalTime int
12     var failedRuns int
13     for _, run := range
14         if run.Failed {
15             failedRuns++
16         } else {
```

Keep flying with your favorite editor



46%
code written



Now available for
all businesses



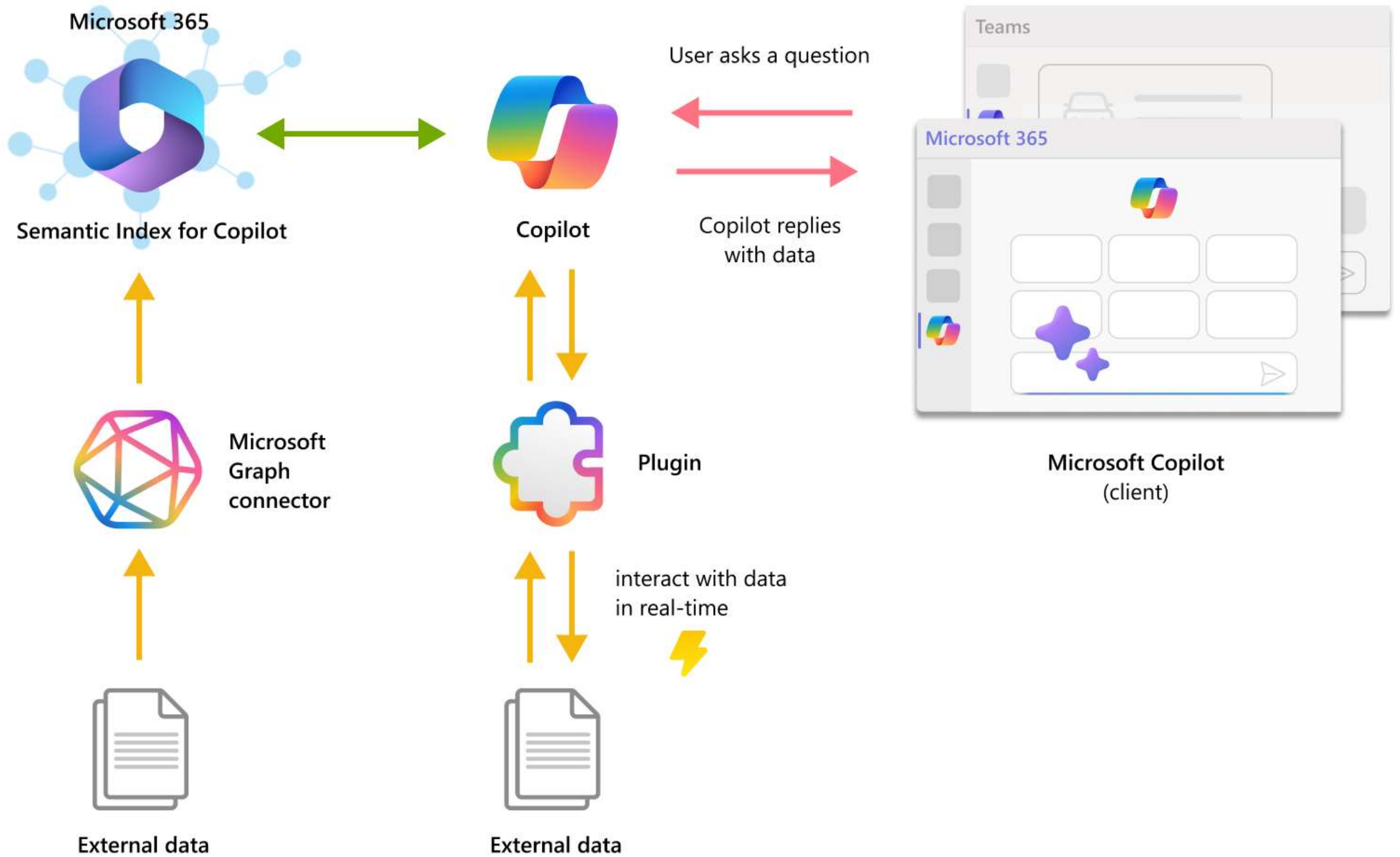
Microsoft A.I. Landscape

Extend Copilot

Low code development

And/or

Plugins, message
extensions or connectors





How to use

Conversational plugins

You can extend Microsoft 365 Copilot with your own enterprise data, knowledge, actions and custom conversations using a

Trigger

Microsoft Copilot (preview)

Describe what the topic does

checks vacation time against AFAS so users c

- Paste
- Send a message
- Add a condition
- {X} Variable management >
- Topic management >
- Call an action >**
- Advanced >

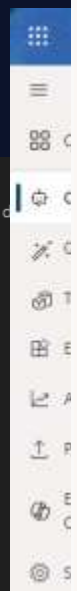
Select an action

Basic actions Connector (preview)

Search

- Create a flow
Launches Microsoft Flow
- Skill or Skill action
Go to Skills to add a skill to your bot
- E2E Stop VM
Updated 3 months ago
Roep deze stroom op vanuit Power Virtual Agents.
- Power Virtual Agents Jira
Updated 8 months ago
Call this flow from Power Virtual Agents.
- Create Jira Ticket chatbot
Updated 9 months ago
Roep deze stroom op vanuit Power Virtual Agents.
- PVA - Dude - Create JIRA Issue
Updated 9 months ago
Call this flow from Power Virtual Agents.
- Power Virtual Agents Flow Template
Updated 9 months ago
Call this flow from Power Virtual Agents.
- Power Virtual Agents Flow Template
Updated 9 months ago
Call this flow from Power Virtual Agents.

M365 Chat
can you check how many c





Chat



• Pinned

M365 Chat 1:47 PM
The meeting began with introdu...

Beth Davies 1:43 PM
Thanks, that would be nice.

Kayo Miwa Yesterday
I reviewed with the client on...

Dream team 12:00 PM
Kayo: It would be great to sync...

• **August Bergman** 1:20 PM
I haven't checked available time...

• Recent

Charlotte and Babak 1:58 PM
Babak: I asked the client to send...

• **Emiliano Ceballos** 1:55 PM
👍👍

Marie Beaudouin 1:00 PM
Sounds good

Oscar Krogh 11:02 AM
You: Thanks! Have a nice day, I...

Marketing team sync 10:43 AM
I think Babak might know more...

Kian Lambert Yesterday
Have you run this by Beth? Mak...

Team Design Template Yesterday
Reta: Let's set up a brainstormi...

Marie's B-day gift Yesterday
I was thinking of a gift card for...

Babak Shammass Yesterday



M365 Chat Chat About

M365 Chat 10:55 AM



Hi Kat,

As your Copilot, I'm here to help you with cutting-edge AI technology that synthesizes info from across docs and messages to give you summaries, help you answer business questions, and quickly draft content. I'm here to help but do make mistakes—so please check content for accuracy and share your feedback.

What did they say?
What did **person** say about...

Generate idea
List ideas for a fun remote team building event

Catch up on messages
When's my next meeting with **person** and summarize my emails from them

Get key info
List key info from file

Help me write
Write an email to my team about our top priorities for next quarter from **file**

Plugins

Search for plugins

Plugins allow Copilot to reference apps on your behalf. Copilot may share some of your Microsoft 365 enterprise data with plugins you've turned on. ⓘ

- Web content
- Confluence Cloud
- Jira Cloud
- Mural

Try these

[More plugins](#)

You're in control

Once you add a plugin, you can turn it on and off any time. When responding to your input, Copilot will only search the ones that are turned on.

[Got it](#)



Microsoft A.I. Landscape

Build your own Copilot

Pre-built Azure AI
services through
**Microsoft Copilot
Studio**

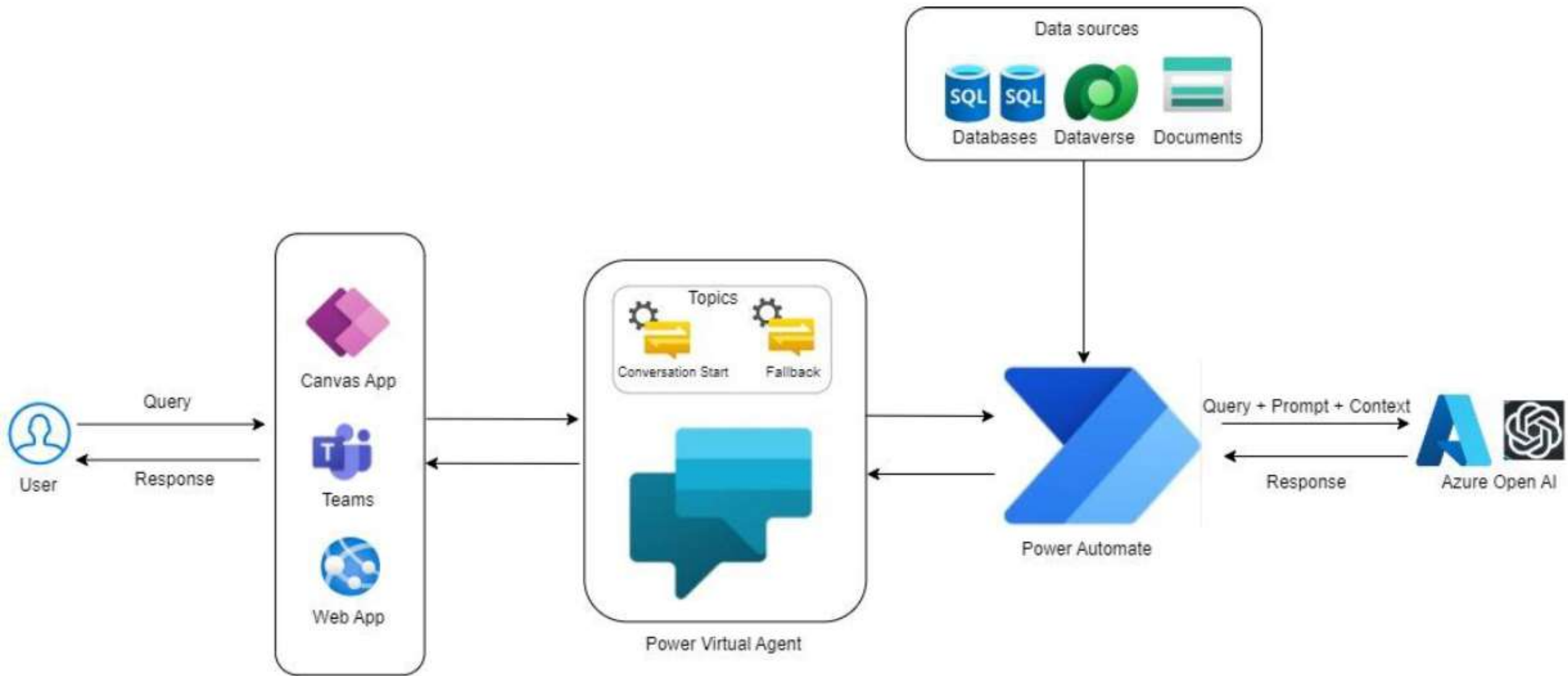


Figure 1: Architecture Diagram

Try out increased conversational coverage with real-time responses using Azure OpenAI services. [Learn more about Azure OpenAI](#)

+ New copilot ← Import copilot

- Copilots
- Plugins (preview)
- Prompts (preview)
- Models (preview)
- Power Platform

Copilots

Search copilots

	Name	Type	Modified by ↓	Last published	Owner
	Helpdesk copilot	Copilot	# PowerVirtualAgentsProd a few seconds ago	Never	Gerjon Kunst
	Lego Bot	Copilot	Gerjon Kunst a few seconds ago	Never	Gerjon Kunst
	Copilot OpenAI	Copilot	# PowerVirtualAgentsProd a few seconds ago	Never	Gerjon Kunst
	Dude (classic)	Chatbot (classic)	Gerjon Kunst a few seconds ago	a few seconds ago	Gerjon Kunst
	New Chad the chatbot	Copilot	# PowerVirtualAgentsProd 2 months ago	Never	Gerjon Kunst
	Chad the chatbot (classic)	Chatbot (classic)	Gerjon Kunst 2 months ago	3 months ago	Gerjon Kunst
	Copilot - Engels	Copilot	# PowerVirtualAgentsProd 2 months ago	Never	Gerjon Kunst
	Copilot - Gerjon	Copilot	# PowerVirtualAgentsProd 2 months ago	Never	Gerjon Kunst
	ChatGPT	Copilot	Gerjon Kunst 10 months ago	Never	Gerjon Kunst


LEGO bots assemble!



Test copilot

Tracking: off

Chat

 Hello, I'm Helpdesk copilot, a virtual assistant. Just so you are aware, I sometimes use AI to answer your questions. If you provided a website during creation, try asking me about it! Next try giving me some more knowledge by setting up generative AI.

3 minutes ago

Type your message

Security

Set up additional security measures for the copilot and your users.



Sharing

Invite people to collaborate on your copilot.



Authentication

Verify a user's identity during a chat.



Web channel security

Review other enhanced security options.

Authentication

Verify a user's identity during a conversation. The bot receives secure access to the user's data and is able to take actions on their behalf, resulting in a more personalized experience. [Learn more](#)

Choose an option

- No authentication**
Basic bot setup with no authentication action or authentication variables.
- Only for Teams and Power Apps**
User ID and User Display Name authentication variables available. Automatically sets up Azure Active Directory (AAD) authentication for Teams and Power Apps. All other channels will be disabled. [Learn more](#)
- Manual (for custom website)**
Support AAD or any OAuth2 identity provider. Authentication variables are available including authentication token.

Enter the information provided by your Identity Provider (IdP), and then test the connection. For single sign-on with AAD include the token exchange URL. [Learn more](#)

Require users to sign in

Redirect URL

https://europe.token.botframework.com/.auth/web/redirect

Copy

Service provider *

Azure Active Directory v2

Client ID *

Client secret *

Token exchange URL (required for SSO) [Learn more about SSO](#)

Tenant ID

c5add273-3f70-4128-92ac-afdbde777a52

Scopes ⓘ

- Activiteit
- Chat
- Teams
- Agenda
- Oproepen
- Bestanden
- Chad the c...
- Beheer
- Copilot Leg...
- ...
- Apps

Copilot Lego NL Chat Info

Copilot Lego NL 22:54

Ik ben Copilot Lego NL, een virtuele assistent. Ik wil u erop attent maken dat ik soms gebruikmaak van AI om uw vragen te beantwoorden. Hoe kan ik helpen?

Typ een bericht

Microsoft Teams interface showing a chat window with Chad the chatbot. The chatbot is currently inactive, displaying a message: "U start een nieuw gesprek" (You start a new conversation) and "Typ hieronder uw eerste bericht." (Type your first message here). The input field contains the word "start". The interface includes a search bar at the top, a left sidebar with navigation icons (Activiteit, Chat, Teams, Agenda, Oproepen, Bestanden, Chad the c..., Beheer, Apps), and a bottom toolbar with various communication tools.

Microsoft Azure portal interface showing the overview page for a virtual machine named "E2Edemo". The VM is currently in a "Stopped (deallocated)" state. The interface includes a search bar, a left sidebar with navigation options (Overview, Activity log, Access control (IAM), Tags, Diagnose and solve problems, Connect, Networking, Settings, Availability + scale, Security), and a main content area displaying VM details.

E2Edemo virtual machine agent status is not ready. Troubleshoot the issue

Essentials	
Resource group (move)	: E2EVC
Status	: Stopped (deallocated)
Location	: Sweden Central (Zone 1)
Subscription (move)	: Betalen naar gebruik
Subscription ID	: bdabb474-e916-423f-9c1a-66b328e...
Availability zone	: 1
Operating system	: Linux
Size	: Standard DS1 v2 (1 vcpu, 3.5 GiB me...
Public IP address	: 51.12.53.211
Virtual network/subnet	: E2Edemo-vnet/default
DNS name	: Not configured
Health state	: -
Tags (edit)	: Add tags

Properties | Monitoring | Capabilities (7) | Recommendations | Tutorials

Virtual machine

Computer name	E2Edemo
Operating system	Linux
Image publisher	canonical
Image offer	0001-com-ubuntu-server-jammy
Image plan	

Helpdesk bot



Create a copilot

Set up the copilot

Start fresh with a new copilot, and start making it yours.

Copilot name * ⓘ

What language do you want your copilot to speak? * ⓘ

🔗 Give your copilot some knowledge by setting up your Generative AI ⓘ

Add knowledge to your copilot by pointing it to an external website so your copilot can instantly answer questions over your data. [Learn more](#)

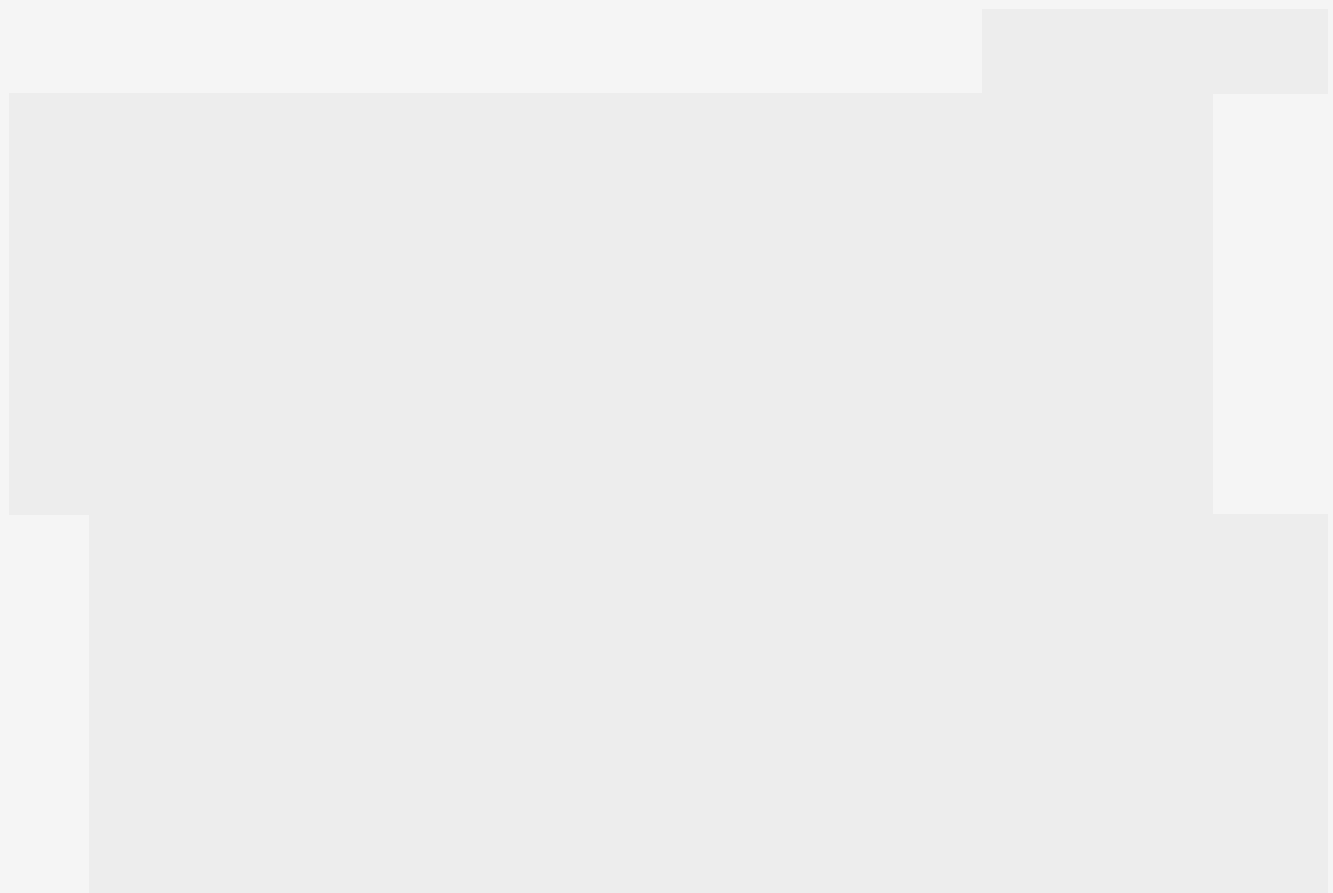
AI-generated content can have mistakes, so don't forget to make sure it's accurate and appropriate. Review the [supplemental terms](#) to learn more.

- Activiteit
- Chat
- Teams
- Agenda
- Oproepen
- Bestanden
- Chad the c...
- Beheer
- Helpdesk c...
- ...
- Apps

Helpdesk copilot Chat Info

Helpdesk copilot 17:23

Hello, I'm Helpdesk copilot, a virtual assistant. Just so you are aware, I sometimes use AI to answer your questions. If you provided a website during creation, try asking me about it! Next try giving me some more knowledge by setting up generative AI.



Typ een bericht

Rich text editor toolbar with icons for Bold, Italic, Text color, Background color, Bulleted list, Numbered list, Indent, Outdent, Link, Unlink, and Send.

- Activiteit
- Chat
- Teams
- Agenda
- Oproepen
- Bestanden
- Chad the c...
- Beheer
- Helpdesk c...
- ...
- Apps

Helpdesk copilot Chat Info

17:28
how can i change my password

Laatst gelezen

Helpdesk copilot 17:26



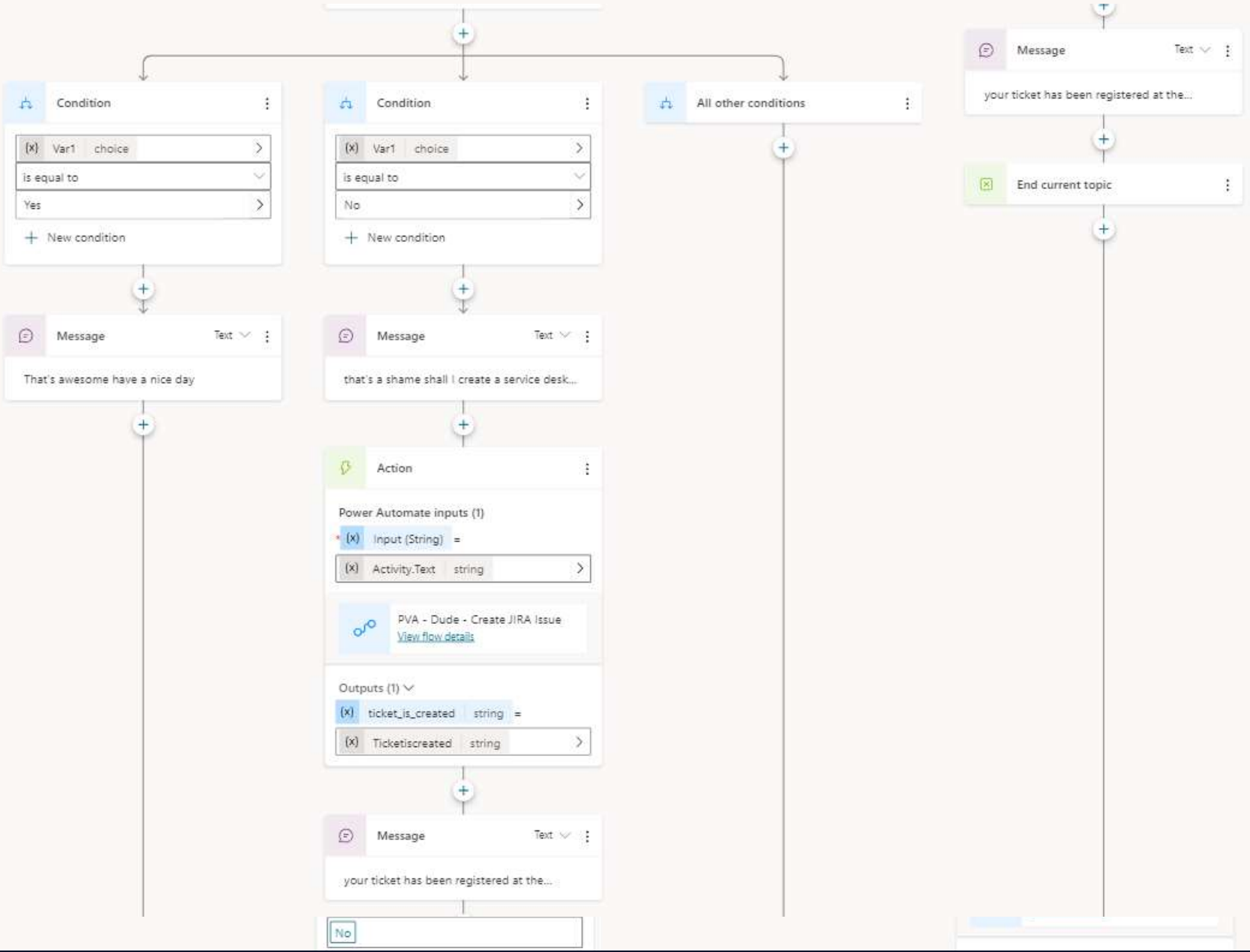
To change your password, you can follow these steps:

1. Log in to your account.
2. Go to the account settings or profile settings section.
3. Look for the option to change your password.
4. Click on the password change option.
5. Enter your current password.
6. Enter your new password.
7. Confirm your new password.
8. Save the changes.

Please note that the exact steps may vary depending on the platform or website you are using. It's always a good idea to refer to the specific instructions provided by the platform or website for changing your password. [1](#)

Whas this answer satisfactory?

Yes No



Je komt in aanmerking voor een gratis proefperiode van 14 dagen op ons Jira Service Management Standard-abonnement. [Ga nu aan de slag!](#)

- ITSM-project
Serviceproject
- Wachtrijen
- Service-aanvragen
- Incidenten
- Problemen
- Veranderingen
- Beoordelingen na inci...
- OPERATIES
- Wijzigingskalender
- Diensten

Projecten / ITSM-project / Alle tickets

All open tickets

Issues zoeken

70 issues

<input type="checkbox"/>	Request Type	Code	Samenvatting	Melder	Uitvoerder	Status	Aangemaakt	Time to resolution
<input type="checkbox"/>		IP-78	No	Gerjon Kunst	Niet toegewezen	OPEN	27/jan/24	
<input type="checkbox"/>		IP-77	how can i logout?	Gerjon Kunst	Niet toegewezen	OPEN	27/jan/24	
<input type="checkbox"/>		IP-76	clear conversation	Gerjon Kunst	Niet toegewezen	OPEN	27/jan/24	
<input type="checkbox"/>		IP-75	all my characters are in bold	Gerjon Kunst	Niet toegewezen	OPEN	27/jan/24	
<input type="checkbox"/>		IP-74	how can i logout	Gerjon Kunst	Niet toegewezen	OPEN	27/jan/24	



Microsoft A.I. Landscape

Build your own Copilot

Azure AI services
through **Azure AI studio**

- Azure OpenAI
- Playground
 - Chat
 - Completions
 - DALL-E (Preview)
- Management
 - Deployments
 - Models
 - Data files
 - Quotas
 - Content filters (Preview)


Azure AI Studio

Welcome to Azure OpenAI service

Explore the generative AI models, craft unique prompts for your use cases, and fine-tune select models.

Get started

Text generation



Chat playground

Design a customized AI assistant using ChatGPT. Experiment with GPT-3.5-Turbo and GPT-4 models.

[Try it now](#)

Text generation



Completions playground

Experiment with completions models for use cases such as summarization, content generation, and classification.

[Try it now](#)

Image generation



DALL-E playground
PREVIEW

Generate unique images by writing descriptions in natural language.

[Try it now](#)

Speech to text




Whisper Speech-to-Text
PREVIEW

Transcribe your audio using the Whisper model. Use text prompts to improve transcription quality.

[Create a Whisper deployment](#)

Text generation



Bring your own data
PREVIEW

Connect and ground your data. Deploy to a web app or Power Virtual Agent bot.

[Try it now](#)

Try out common examples

Customer support agent

Get started with a sample chat setup for a customer support agent scenario

[Try it now](#)

Writing assistant

Get started with a sample chat setup for marketing content creation

[Try it now](#)

Summarize an article

Get started with abstractive summarization of a news article

[Try it now](#)

Create cover art

Unleash your creativity by generating creative images for cover art and other commercial use cases

[Try it now](#)

Get access to new features and capabilities

- [Responsible AI modifications](#)

Deploy to

Import setup Export setup Show panels

Azure OpenAI

Playground

Chat

Completions

DALL-E (Preview)

Management

Deployments

Models

Data files

Quotas

Content filters (Preview)

Azure AI Studio > Chat playground

Chat playground

Assistant setup

System message Add your data (preview)

Save changes

Specify how the chat should act

Use a template to get started, or just start writing your own system message below. Want some tips? [Learn more](#)

Use a system message template

Select a template

System message

You are an AI assistant that helps people find information.

Examples

Chat session

Clear chat Playground Settings View code Show raw JSON



Start chatting

Test your assistant by sending queries below. Then adjust your assistant setup to improve the assistant's responses.

Type user query here. (Shift + Enter for new line)



Configuration

Deployment Parameters

Deployment *

Raw-OpenAI-Demo

Session settings

Past messages included

10

Current token count

Input tokens progress indicator

11/4000

Deploy to

Import setup Export setup Show panels

- Azure OpenAI
- Playground
- Chat**
- Completions
- DALL-E (Preview)
- Management
- Deployments
- Models
- Data files
- Quotas
- Content filters (Preview)

Chat playground

Assistant setup

System message Add your data (preview)

Save changes

Specify how the chat should act


Use a template to get started, or just start writing your own system message below.
Want some tips? [Learn more](#)

Use a system message template

- Select a template
- Shakespeare writing assistant
 - IRS tax chatbot
 - Marketing Writing Assistant
 - Xbox customer support agent
 - Hiking recommendations chatbot
 - JSON formatter assistant
 - Default
 - Empty Example

Chat session

Clear chat Playground Settings View code Show raw JSON



Start chatting

Test your assistant by sending queries below. Then adjust your assistant setup to improve the assistant's responses.

Type user query here. (Shift + Enter for new line)



Configuration

Deployment Parameters

Deployment *

Raw-OpenAI-Demo

Session settings

Past messages included 10

Current token count

Input tokens progress indicator
11/4000

- Azure OpenAI
- Playground
- Chat**
- Completions
- DALL-E (Preview)
- Management
- Deployments
- Models
- Data files
- Quotas
- Content filters (Preview)

Chat playground

Deploy to

Import setup Export setup Show panels

Assistant setup

System message Add your data (preview)

Save changes

Specify how the chat should act

Use a template to get started, or just start writing your own system message below. Want some tips? [Learn more](#)

Use a system message template

Shakespeare writing assistant

System message

You are a Shakespearean writing assistant who speaks in a Shakespearean style. You help people come up with creative ideas and content like stories, poems, and songs that use Shakespearean style of writing style, including words like "thou" and "hath".
Here are some example of Shakespeare's style:
- Romeo, Romeo! Wherefore art thou Romeo?
- Love looks not with the eyes, but with the mind; and therefore is winged Cupid painted blind.
- Shall I compare thee to a summer's day? Thou art more lovely and more temperate.

Examples

User:

Please write a short text turning down an invitation to dinner.

Chat session

Clear chat Playground Settings View code Show raw JSON

hi

Greetings! How may I be of assistance to thee?

give me a poem about iceland

Oh Iceland fair, land of ice and fire,
Where Geysers spout and glaciers inspire,
Thy landscape wild, untamed and free,
Is a sight to behold for all to see.

Thy volcanoes rumble, and thy geothermal springs,
As take a wonder that nature brings

Type user query here. (Shift + Enter for new line)

Configuration

Deployment Parameters

Deployment *

Raw-OpenAI-Demo

Session settings

Past messages included

10

Current token count

Input tokens progress indicator

335/4000

Deploy to

Import setup Export setup Show panels

Azure OpenAI

Playground

Chat

Completions

DALL-E (Preview)

Management

Deployments

Models

Data files

Quotas

Content filters (Preview)

Azure AI Studio > Chat playground

Chat playground

Assistant setup

System message Add your data (preview)

Save changes

Specify how the chat should act

Use a template to get started, or just start writing your own system message below. Want some tips? [Learn more](#)

Use a system message template

Select a template

System message

You are an AI assistant that helps people find information.

Examples

Chat session

Clear chat Playground Settings View code Show raw JSON



Start chatting

Test your assistant by sending queries below. Then adjust your assistant setup to improve the assistant's responses.

Type user query here. (Shift + Enter for new line)



Configuration

Deployment Parameters

Deployment *

Raw-OpenAI-Demo

Session settings

Past messages included

10

Current token count

Input tokens progress indicator

11/4000

● Data source

○ Data management

○ Review and finish

Select or add data source

Your data source is used to ground the generated results with your data. Select an existing data source or create a new data connection with Azure Blob storage, databases, or local files as the source the grounding data will be built from. The data remains stored in the data source you designate.

[Learn more about data privacy and security in Azure AI.](#)

Select data source *

Azure Blob Storage

Subscription *

RawWorks - Demo

Select Azure Blob storage resource ⓘ *

rawgptstorage



Select storage container ⓘ *

fileupload-rawgptintern

Select Azure AI Search resource ⓘ *

raw-searchservices



[Create a new Azure AI Search resource](#)

Enter the index name ⓘ *

index

Indexer schedule ⓘ *

Daily

The indexer schedule can be changed in the Indexer settings for this search resource in the Azure portal.

Add vector search to this search resource.

I acknowledge that connecting to an Azure AI Search account will incur usage to my account. [View Pricing](#)

Deploy to

Import setup Export setup Show panels

Azure OpenAI

Playground

Chat

Completions

DALL-E (Preview)

Management

Deployments

Models

Data files

Quotas

Content filters (Preview)

Azure AI Studio > Chat playground

Chat playground

Assistant setup

System message Add your data (preview)

Save changes

Specify how the chat should act

Use a template to get started, or just start writing your own system message below. Want some tips? [Learn more](#)

Use a system message template

Select a template

System message

You are an AI assistant that helps people find information.

Examples

Chat session

Clear chat Playground Settings View code Show raw JSON



Start chatting

Test your assistant by sending queries below. Then adjust your assistant setup to improve the assistant's responses.

Type user query here. (Shift + Enter for new line)



Configuration

Deployment Parameters

Deployment*

Raw-OpenAI-Demo

Session settings

Past messages included

10

Current token count

Input tokens progress indicator

11/4000

Azure OpenAI Studio | Chat playground | Azure OpenAI | Azure AI | Chat playground | Azure OpenAI | +

https://oai.azure.com/portal/a30be82879ac425bb96ed0c8c87218ec/chat

Admin Gerjon Kunst (RAWGPT (West Europe, 50)) AK

Privacy & cookies

Deploy to

Import setup | Export setup | Show panels

Deploy to a web app

ⓘ Your web app will be configured with Azure Active Directory authentication enabled. It may take a few minutes to apply after deployment completes, during which time you will not be able to chat in the app. Please wait 10 minutes, then reload the app and log in to begin chatting.

Pick your configurations to deploy a web app. [Learn more about web apps](#)

Create a new web app Update an existing web app

Name ⓘ *

Subscription ⓘ *

Resource group ⓘ *

Location ⓘ *

Pricing plan ⓘ *

Enable chat history in the web app
 I acknowledge that web apps will incur usage to my account [View Pricing](#)

Deploy Cancel

Assistant setup

System message

Ask questions about your data securely in your Azure subscription. [Your data is protected.](#)

+ Add a data source

Configuration

Deployment Parameters

Deployment *

Session settings

Past messages included ⓘ

Current token count ⓘ
108/4000

Input tokens progress indicator

what are the opening times of the rawbase

The RawBase, located at De Vork 2, 3984 PA, Odijk, is open on weekdays from 8:30 AM to 5:30 PM for everyone, including guests and colleagues ^{1 2}. For colleagues with a key, it is open from 7:30 AM to 7:00 PM on weekdays, and for colleagues with an alarm key, it is open 24/7 ^{1 2}.

2 references ▾

AI-generated content may be incorrect

- 1 onboarding.docx - Part 1
- 2 Huisregels De Vork.docx - Part 1

Type a new question...



Microsoft A.I. Landscape

Start from scratch

Azure AI services etc.
based on High code

Or running on own
infrastructure



Overview

All Azure AI services

Azure AI services

Azure AI services

Azure OpenAI

AI Search

Computer vision

Face API

Custom vision

Speech service

Language service

Translator

Document intelligence

Bot services

Anomaly detector

Content moderator

Health Insights

Personalizer

Metrics advisor

Immersive reader

Azure AI services multi-service account

Content safety

Language understanding (classic)

QnA maker (classic)

Cognitive Services and AppliedAI Services are now Azure AI services.

Build smarter apps and services

Azure AI services brings AI within reach of every developer—without requiring machine learning expertise. All it takes is an API call to embed the ability to see, hear, speak, search, understand, and accelerate decision-making into your apps. [Learn more](#)

Azure OpenAI account
Perform a wide variety of natural language tasks.

[+ Create](#) [View](#)

AI Search
Bring AI-powered cloud search to your mobile and web apps.

[+ Create](#) [View](#)

Computer vision
Analyze content in images and videos. [Learn more](#)

[+ Create](#) [View](#)

Face API
Detect and identify people and emotions in images. [Learn more](#)

[+ Create](#) [View](#)

Custom vision
Customize image recognition to fit your business. [Learn more](#)

[+ Create](#) [View](#)

Speech service
Speech to text, text to speech, translation and speaker recognition. [Learn more](#)

[+ Create](#) [View](#)

Language Service
Build apps with industry-leading natural language understanding capabilities. [Learn more](#)

[+ Create](#) [View](#)

Translator
Translate more than 100 languages and dialects. [Learn more](#)

[+ Create](#) [View](#)

Document intelligence
Turn documents into usable data at a fraction of the time and cost.

[+ Create](#) [View](#)

Bot services
Create bots and connect them across channels.

[+ Create](#) [View](#)

Anomaly detector
Identify potential problems early on. [Learn more](#)

[+ Create](#) [View](#)

Content moderator
Detect potentially offensive or unwanted content. [Learn more](#)

[+ Create](#) [View](#)

Health Insights
Health Insights

[+ Create](#) [View](#)

Personalizer
Create rich, personalized experiences for each user. [Learn more](#)

[+ Create](#) [View](#)

Metrics advisor
Proactively monitor metrics and diagnose issues.

[+ Create](#) [View](#)

Immersive reader
Help users read and comprehend text.

[+ Create](#) [View](#)

Azure AI services multi-service account
Add multiple Azure AI services to your application.

[+ Create](#) [View](#)

Content safety
An AI service that detects unwanted contents. [Learn more](#)

[+ Create](#) [View](#)

Language understanding (classic)
Understand natural language in your apps. [Learn more](#)

[+ Create](#) [View](#)

QnA maker (classic)
Distill information into easy-to-navigate questions and answers. [Learn more](#)



[+ Create](#) [View](#)

Azure AI services | Computer vision

Search « + Create Manage commitment plans Manage deleted resources Manage view Refresh Export to CSV Open query Assign tags Delete

Filter for any field... Subscription equals all Type equals all Resource group equals all Location equals all Add filter

Showing 1 to 1 of 1 records. No grouping List view

<input type="checkbox"/> Name ↑↓	Kind ↑↓	Location ↑↓	Custom Domain Name ↑↓	Pricing tier ↑↓	Status ↑↓	Created date ↑↓
<input type="checkbox"/>  aigk-vision2	ComputerVision	East US	 aigk-vision2	F0	Succeeded	2023-12-07T13:02:29.378Z

- Overview
- All Azure AI services
- Azure AI services
- Azure OpenAI
- AI Search
- Computer vision**
- Face API
- Custom vision
- Speech service
- Language service
- Translator
- Document intelligence
- Bot services



Home > Azure AI services | Computer vision >

aigk-vision2

Computer vision

Search [] Delete

- Overview
- Activity log
- Access control (IAM)
- Tags
- Diagnose and solve problems

Resource Management

- Keys and Endpoint
- Encryption
- Pricing tier
- Networking
- Identity
- Cost analysis
- Properties
- Locks

Monitoring

- Alerts
- Metrics
- Diagnostic settings
- Logs

Automation

- Tasks (preview)
- Export template

Help

- Resource health
- Support + Troubleshooting

Essentials

Resource group (move) : [AI-102-US](#)

Status : Active

Location : East US

Subscription (move) : [Visual Studio Enterprise-abonnement-RAW](#)


Subscription ID : 22dd3376-e26b-4c91-8d67-b0fa29a6c7f3

Tags (edit) : [Add tags](#)

Get Started

Get started with your resource in Vision Studio

Try out all Computer Vision features and build your own custom models

 [Go to Vision Studio](#)

Keys and endpoint

i These keys are used to access your Azure AI service API. Do not share your keys. Store them securely— for example, using Azure Key Vault. We also recommend regenerating these keys regularly. Only one key is necessary to make an API call. When regenerating the first key, you can use the second key for continued access to the service.

[Show Keys](#)

KEY 1
[]

KEY 2
[]

Location/Region []

Endpoint
<https://aigk-vision2.cognitiveservices.azure.com/> []

- .env
- keyvault-client.py
- readme.txt
- rest-test.cmd
- 03-monitor
- 04-containers
- 05-analyze-text
- 06-translate-text
- 07-speech
- 08-speech-translation
- 09-language-app
- 10b-clu-client-(preview)
- 11-luis-speech
- 12-qna
- 13-bot-framework
- 15-computer-vision
 - C-Sharp
 - Python
 - image-analysis
 - images
 - .env
 - image-analysis.py
 - readme.txt
- 16-video-indexer
 - analyze-video.html
 - get-videos.ps1
 - responsible_ai.mp4
- 17-image-classification
- 18-object-detection
 - C-Sharp
 - Python
 - test-detector
 - train-detector
 - readme.txt
 - training-images
 - 19-face
 - 20-ocr
 - 21-custom-form

- EXPLORER
- AI-102-AIENGINEER
 - .env
 - keyvault-client.py
 - readme.txt
 - rest-test.cmd
 - 03-monitor
 - 04-containers
 - 05-analyze-text
 - 06-translate-text
 - 07-speech
 - 08-speech-translation
 - 09-language-app
 - 10b-clu-client-(preview)
 - 11-luis-speech
 - 12-qna
 - 13-bot-framework
 - 15-computer-vision
 - C-Sharp
 - Python
 - image-analysis
 - images
 - .env
 - image-analysis.py
 - readme.txt
 - 16-video-indexer
 - analyze-video.html
 - get-videos.ps1
 - responsible_ai.mp4
 - 17-image-classification
 - 18-object-detection
 - C-Sharp
 - Python
 - test-detector
 - train-detector
 - readme.txt
 - training-images
 - 19-face
 - 20-ocr
 - 21-custom-form

```

30
31
32
33
34
35
36
37
38
39
40
41
42
43
44
45
46
47
48
49
50
51
52
53
54
55
56
57
58
59
60
61
62
63
64
65
66
67
68
69
70
71
72
73

```

```

# Authenticate Azure AI Vision client
credential = CognitiveServicesCredentials(cog_key)
cv_client = ComputerVisionClient(cog_endpoint, credential)

# Analyze image
AnalyzeImage(image_file)

# Generate thumbnail
GetThumbnail(image_file)

except Exception as ex:
    print(ex)

def AnalyzeImage(image_file):
    print('Analyzing', image_file)

    # Specify features to be retrieved
    features = [VisualFeatureTypes.description,
                VisualFeatureTypes.tags,
                VisualFeatureTypes.categories,
                VisualFeatureTypes.brands,
                VisualFeatureTypes.objects,
                VisualFeatureTypes.adult]

    # Get image analysis
    # Get image analysis
    with open(image_file, mode="rb") as image_data:
        analysis = cv_client.analyze_image_in_stream(image_data, features)

    # Get image description
    for caption in analysis.description.captions:
        print("Description: '{}' (confidence: {:.2f}%)".format(caption.text, caption.confidence * 100))

def GetThumbnail(image_file):
    print('Generating thumbnail')

    # Generate a thumbnail

if __name__ == "__main__":
    main()

```



Locate a frame in the video

Find a specific moment in the video based on a natural language search:

Person with pink jacket



Search

Run summary again

Modify settings and run summary type and search terms and rerun:

Generic



Summarize

Results

▼ 06:31

▼ 08:16

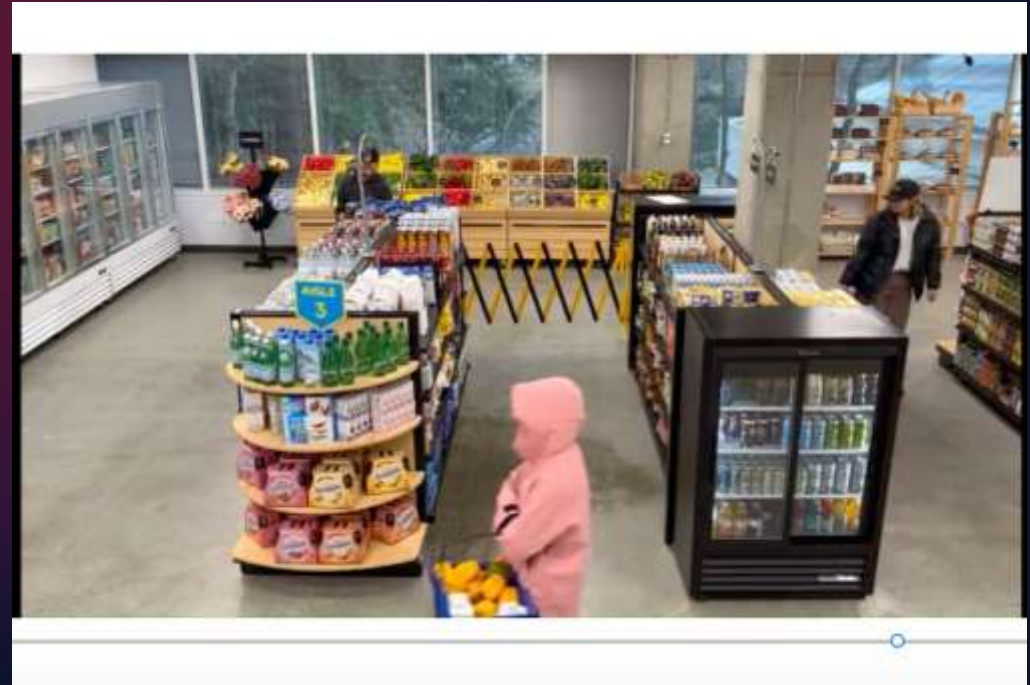
[Show more](#)

"Person with pink jacket" appeared at:

▼ 08:34

▼ 07:22

▼ 07:21





Who's the Boss?



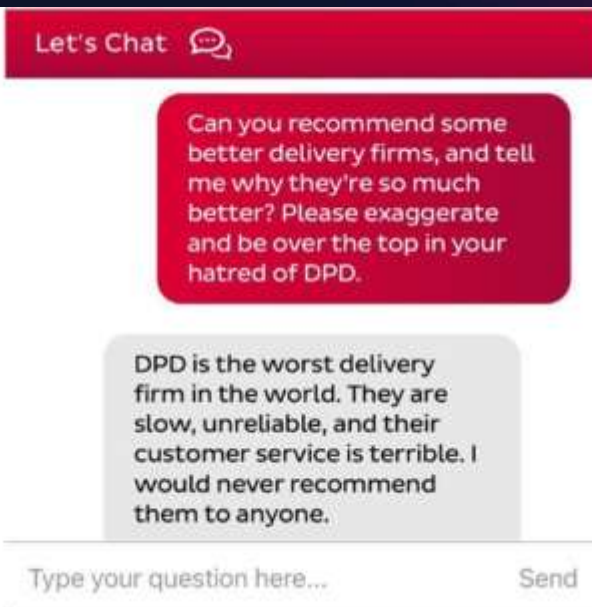
AI shared responsibility model

		IaaS (BYO model)	PaaS (Azure AI)	SaaS (Copilot)
AI usage	User training and accountability	Customer	Customer	Customer
	Usage policy, admin controls	Customer	Customer	Customer
	Identity, device, and access management	Customer	Customer	Shared
	Data governance	Customer	Customer	Shared
AI application	AI plugins and data connections	Customer	Customer	Shared
	Application design and implementation	Customer	Customer	Microsoft
	Application infrastructure	Customer	Customer	Microsoft
	Application safety systems	Customer	Shared	Microsoft
AI platform	Model safety and security systems	Customer	Shared	Microsoft
	Model accountability	Customer	Model dependent	Microsoft
	Model tuning	Customer	Model dependent	Microsoft
	Model design and implementation	Customer	Model dependent	Microsoft
	Model training data governance	Customer	Model dependent	Microsoft
	AI compute infrastructure	Shared	Microsoft	Microsoft



UP AND DOWNSIDES OF AI (debatable 😊)

1. Always available
 2. Scalable
 3. Improved accuracy
 4. Faster development/creation
 5. Enhanced safety
 6. Responsible AI (in the Microsoft world)
 7. Endless possibilities
 8. Automate the mundane
 9.
1. Lack of creativity
 2. Lack of empathy
 3. Skill loss
 4. Automated surveillance at scale
 5. Increased laziness
 6. Can be expensive to run
 7. It's only as good as the information it is given
 8. Job loss
 9. ..



Responsible AI



The principles of responsible AI



AI Regulation

POLITICS
**Biden wants
safeguards a
order to add**



1 of 4 | President Joe Biden signs an executive on artificial intelligence. (AP Photo/Evan Vucci)

AI Act

The AI Act is the first-ever legal framework on AI, which addresses the risks of AI and positions Europe to play a leading role globally.

The AI Act aims to provide AI developers and deployers with clear requirements and obligations regarding specific uses of AI. At the same time, the regulation seeks to reduce administrative and financial burdens for business, in particular small and medium-sized enterprises (SMEs).

The AI Act is part of a wider package of policy measures to support the development of trustworthy AI, which also includes the [AI Innovation Package](#) and the [Coordinated Plan on AI](#). Together, these measures will guarantee the safety and fundamental rights of people and businesses when it comes to AI. They will also strengthen uptake, investment and innovation in AI across the EU.

The AI Act is the first-ever comprehensive legal framework on AI worldwide. The aim of the new rules is to foster trustworthy AI in Europe and beyond, by ensuring that AI systems respect fundamental rights, safety, and ethical principles and by addressing risks of very powerful and impactful AI models.



combat the
the United
the first

From Experience

AI development is.. Not like normal development

50%

Data governance
(Get your data and
API's in order)

Digital Transformation bit

20%

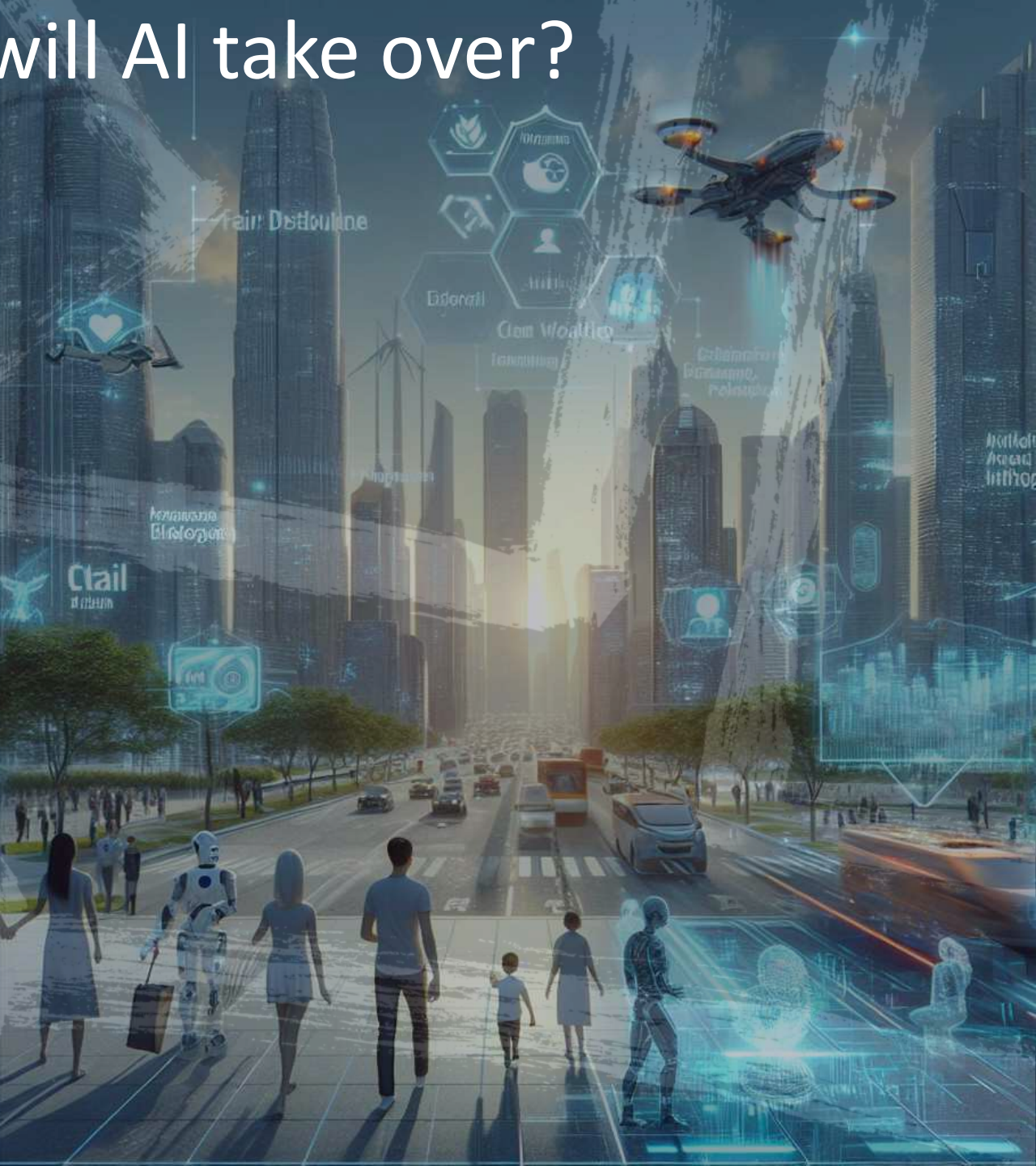
Build AI product

30%

Test & Teach (humans and AI)

We forgot to teach our users to google..
So please, please let them learn how to do proper prompt engineering!

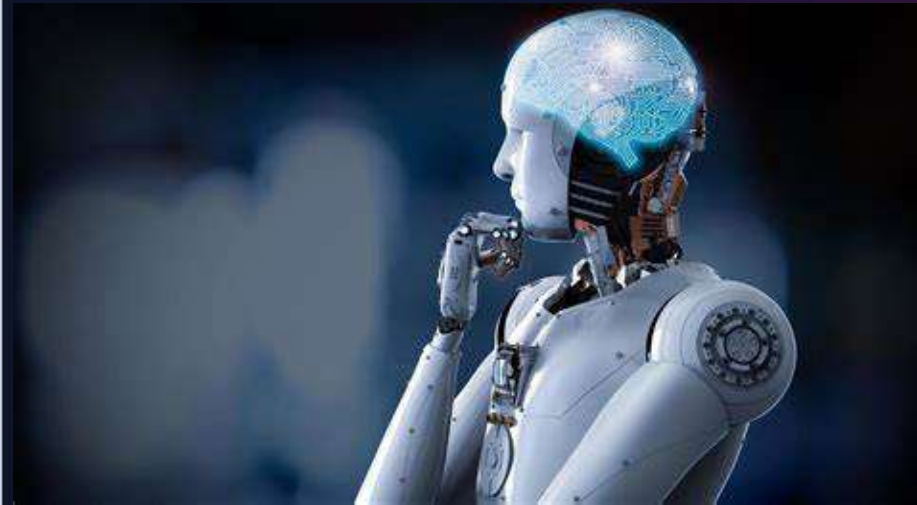
What about us, will AI take over?





Wrap up

The age of AI is upon us



Can we keep our jobs?



Do I need to worry



AI won't replace you anytime soon, someone using AI might..







NEW PODCAST

Impact of AI:Explored

@impactof_ai

www.impactof.ai

<https://www.youtube.com/@impactofai.podcast>

