



What's New in AVD and W365

Toby Brown

Senior Specialist, Advanced Workload Global Black Belt
uk.linkedin.com/in/toby-brown
toby.brown@microsoft.com
[@sideshowtob](#)

Anthony Tyler

Cloud Endpoint Technical Specialist (Windows monkey)
anthonytyler@microsoft.com

Thursday, 28 March 2024

Azure Virtual Desktop

Recent previewed and generally available features



Seamless User Experience

- [New web client UI](#)
- [Symmetric NAT support for RDP Shortpath](#) (public preview)
- [Access OneDrive for Business files with RemoteApp deployments](#) (public preview)
- [Directly link to Azure Virtual Desktop resources with new URI schemes](#) (public preview)
- Relative Mouse (private preview)
- Calling redirection via MMR for telephony apps (private preview)
- [Windows App](#), new unified client (public preview)
- [New Teams app on Azure Virtual Desktop](#)



Better Security and Reliability

- [Confidential Compute VMs](#)
- [Private Link](#)
- [Apply a watermark to the session](#)
- [Single Sign-On \(SSO\)](#)
- [In-session passwordless authentication](#)
- [Purview Endpoint DLP support](#)
- Tamper Protection support
- Administrator can control one-way clipboard redirection (public preview)



Easy Manageability

- [Azure Virtual Desktop Insights admins can migrate to Azure Monitor Agent](#)
- Azure Virtual Desktop ADMX available in Intune administrative templates and Settings Catalog
- [AutoScale for Personal Desktop](#)
- [Hibernate support for autoscale](#) (public preview)
- [Custom image templates](#)
- Enhanced Overview page in Azure portal with new links and content references
- FSLogix agent included in Windows 11/10 multisesion images
- FSLogix ADMX available in Microsoft Intune administrative templates and Settings Catalog
- Ability for Admins to invoke Restart, Start, Stop actions from Admin portal
- Watermarking & Screen capture protection can be configuring using Intune Settings Catalog
- FSLogix support for new Teams (public preview)

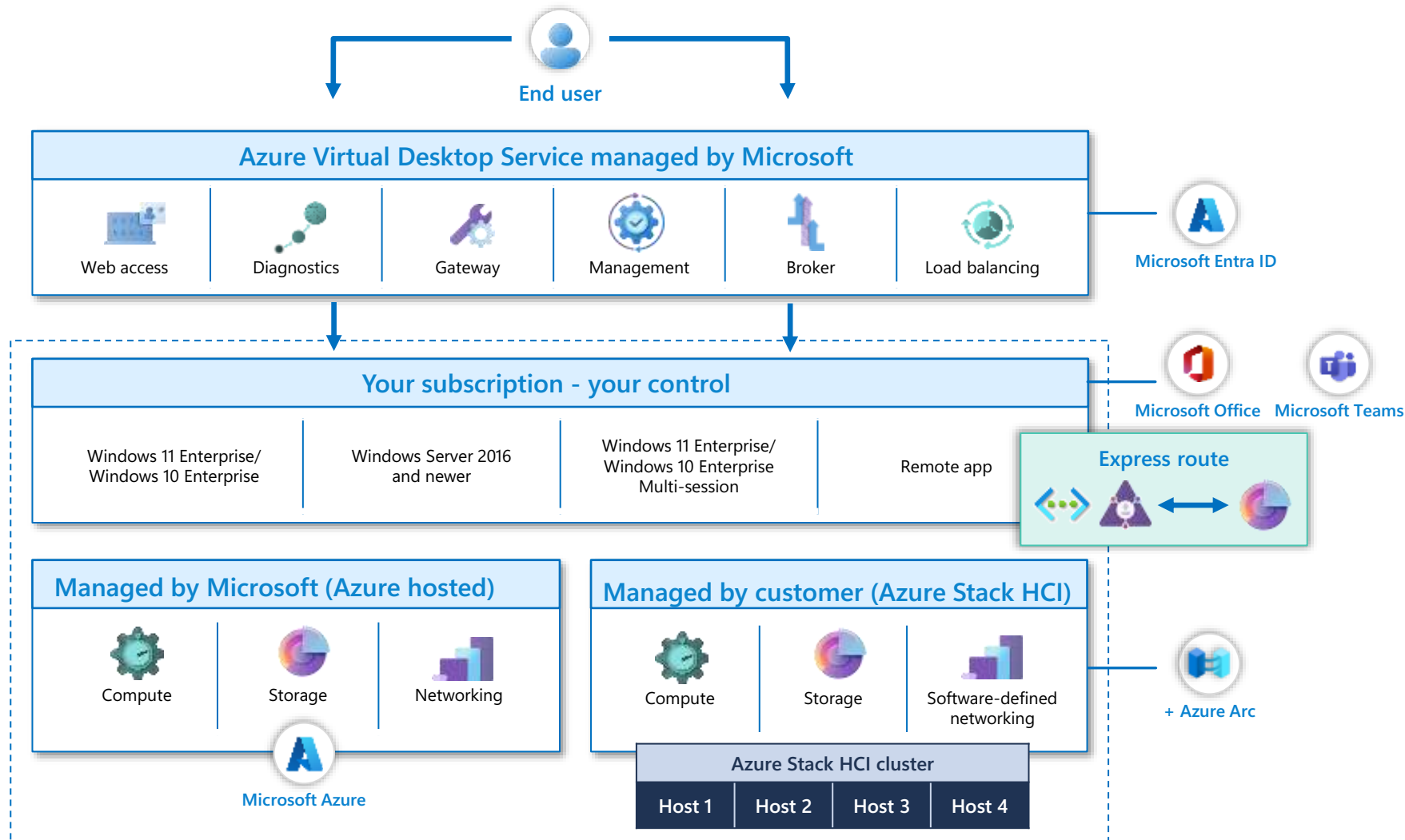


Deployment Flexibility

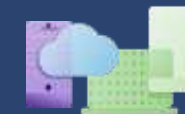
- [Azure Virtual Desktop for Azure Stack HCI](#)
- [Guided experience to create custom image in Azure portal](#)
- Admins can update host pool with a host image, VM size and disk type through admin UX and PowerShell (private preview)
- [MSIX app attach packages can now be applied to multiple host pools simultaneously, entitled per user, and Microsoft Entra joined supported](#) (public preview)
- Support for US Government Top Secret (NAT) cloud (public preview)
- Select images from shared and community galleries in host pool creation

Navigate to [What's new in Azure Virtual Desktop](#) doc to learn about everything that's new in greater detail with links to documentation.

Azure Virtual Desktop architecture and Azure Stack HCI



Provide your employees with a secure, remote desktop experience.



Connect from virtually any device of your choice.



Focus on the right policies and controls rather than managing infrastructure.

Windows App (preview)

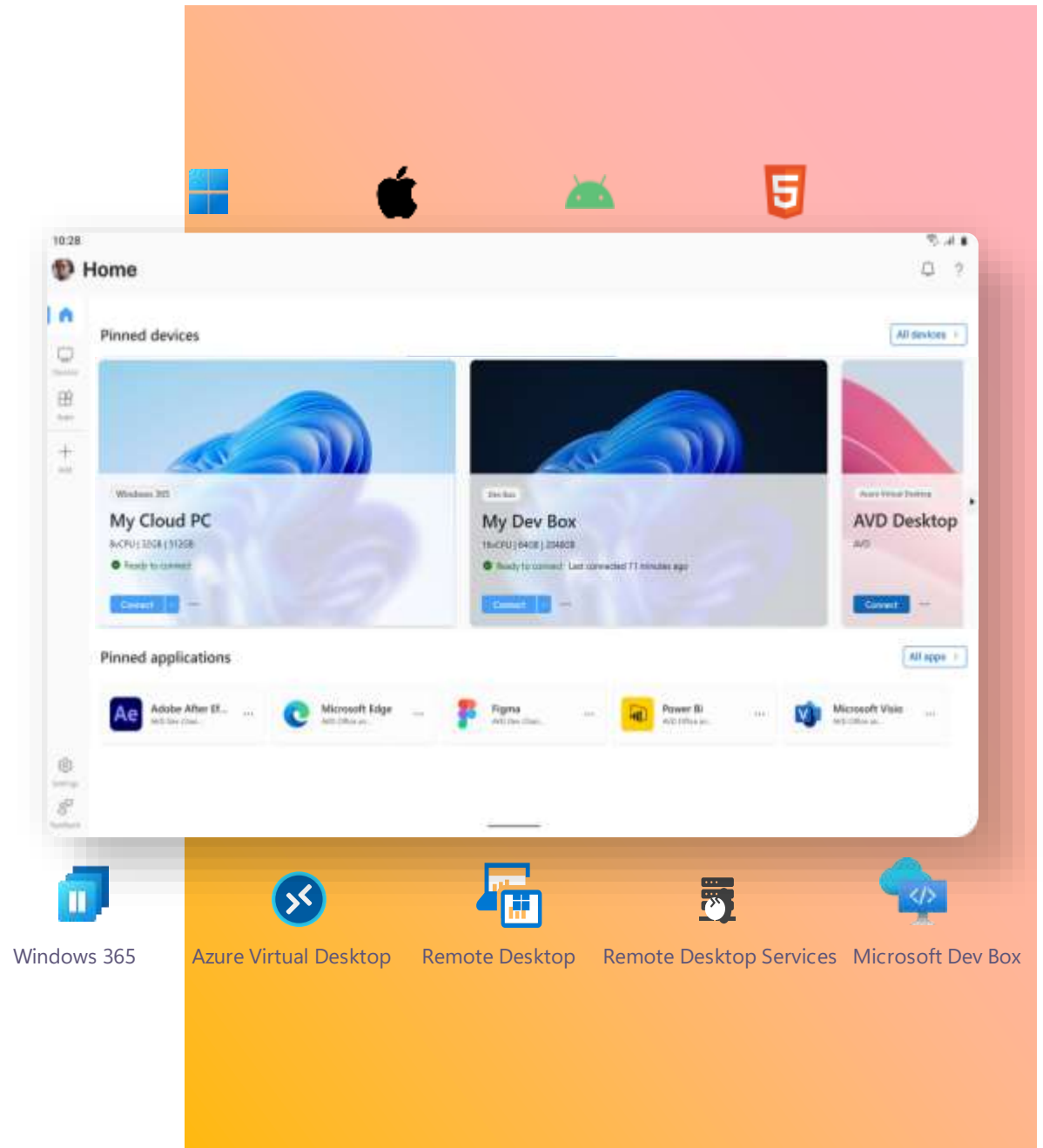
Windows App is a unified client on Windows, iOS, Android, Mac, and Web that can access Windows 365, Azure Virtual Desktop, Remote Desktop Services, Remote Desktop, Microsoft Dev Box, and more.

Windows App allows easy access to multiple services across client platforms with a simple and unified experience.

Windows and Web public preview access

Windows 365 app users: A preview toggle on the app which, if enabled, turns on the Windows App experiences and, if disabled, returns them to the current Win 365 app experiences.

Windows 365 users on the web: A banner will redirect to the new Windows App web portal, and can return to the Windows 365 web portal by going to www.Windows365.com



Windows 365 Enterprise

Recent previewed and generally available features



Seamless user experience

- [Windows 365 Boot](#) - Shared PC & Dedicated mode
- [Windows 365 Switch](#)
- [Windows 365 Frontline](#)
- [Web client enhancements \(HW decode\)](#)
- Pin Cloud PC to Taskbar from Windows 365 app
- Shortpath (UDP) for managed networks
- New setting to allow users to reprovision their own Cloud PC
- Windows 365 web client enhancements , incl. location redirection, camera redirection, special keys (public preview)
- Calling redirection via MMR for telephony apps (private preview)
- [Support for UDP TURN connectivity](#) (public preview)
- [Windows 365 higher configuration \(16vCPU\) SKUs](#)
- Windows 11 23H2 released, day 1 support with gallery images
- [Windows App](#) (public preview)
- [Graphic Processing Unit \(GPU\) SKUs \(targeting limited public preview only\)](#)
- Windows 365 Switch & Boot support for US Gov



Security and reliability

- [Support for Microsoft Intune Endpoint Privilege Management](#)
- [Ability to assign Microsoft Intune Tamper protection policy](#)
- [Purview Endpoint DLP support](#)
- [Custom names template for Cloud PC as part of Provisioning Policy](#)
- GCC simplified ANC configuration
- GCC purchase and deploy Windows 365 Cloud PCs into Azure Commercial cloud
- [Region expansion: Sweden Central, South Africa North](#)
- Azure Tag for Microsoft Intune, Citrix on Windows 365
- ANC requires least amount of privileges
- [Single Sign-On \(SSO\) for both Microsoft Entra joined Cloud PCs and Hybrid Entra joined Cloud PCs](#)
- [Disk Encryption with Purview Customer Key \(BYOK\)](#) (preview)
- [Customer Lockbox](#)
- Integrate audit logs into Log Analytics
- Watermarking & Screen capture protection can be configured using Intune Settings Catalog (public preview)
- RBAC Intune scope tags for support for W365 workloads (private preview)
- One way clipboard redirection control (public preview)



Full control over configuration

- Ability to move a Cloud PC to a new virtual network or region
- User-driven Cloud PC reset
- [Resize](#) & [Downsize](#) including group-based licensing
- Bulk action reporting (public preview)
- [WW Support for resizing via step-up licenses](#)
- Concurrency report for Windows 365 Frontline (public preview)
- [Utilization insight reports](#) (public preview)
- Connection quality reports (public preview)
- [Connectivity report](#) (public preview)
- IT admin alerts on Cloud PC that aren't available (public preview)
- AI-based PC device recommendation for optimized performance and usage (public preview)
- Maintenance windows (public preview)
- Alerting for concurrency for Frontline (public preview)



Windows 365 fully integrated

- [VMware with Blast integration](#) (public preview)
- [Moto Thinkphone integration](#)
- [New Microsoft Teams app integration with Windows 365](#)

Navigate to [What's new in Windows 365 Enterprise](#) or [Business](#) doc to learn about everything that's new in greater detail with links to documentation.



Thank You