

LOGIN **VSI**

Welcome to EUC Forum

Lee Jeffries

Senior Solution Architect

- Current CTP and VIPP
- Current member of Go-EUC
- Technology Geek and Testing nerd
- Father and Husband
- Running and Triathlon

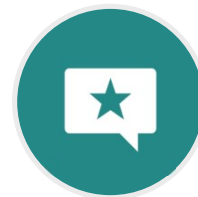


Embracing Change

A New Era at Login VSI



12 months of change and refinement



Improved client satisfaction



Emphasis on customer-first approach



New initiatives and feedback into internal teams



Dedicated customer success team



Relationships are what EUC is about

Bas Lee



So Lee, tell me about your most important use case.

A hugely important use case for our business is being able to understand the risks when we make changes. An example is a new anti-virus solution we're installing soon.



Oh thats interesting, what sort of environment do you have? How many users? What vendors?



We currently have 10,000 concurrent users, we're using Citrix published desktops.



Message



Bas Lee

using Citrix published desktops.



Okay, thats some good information, lets give you a demo so you can understand how we'll address your needs.



Demo takes place

Lee likes what he sees

So Lee, how did you like the demo?



The demo was great Bas, i'm very interested. How is the product licensed?



The product is licensed on a per user basis. We would quote for 10,000 users.



Message



Bas Lee

Okay, i don't think it makes sense based on our architecture. The two datacenters are identical and we'd never test the full load. We would probably only test 5000 users at most.



No problem, i understand. How about i provide you a quote for the 5000 users?



Sounds good Bas, thanks



Also, we can help with a business case, we have a great ROI calculator that specifically focuses on EUC. Ill send you some questions so we can populate that.



Message



Optimising Digital Workspaces

Automated performance and scalability testing for images, apps & desktops

Image Change Control

Automatically perform full image and application checks without waiting on app owners—ensuring applications run consistently and perform reliably.

- IMAGE TESTING
- APPLICATION VALIDATION
- AGENT IMPACT ANALYSIS
- AUTOMATED CHANGE CONTROL

Preproduction Visibility

Get ahead of the curve by assessing and enhancing performance, scalability, and user experience before deployment with industry recognized load testing.

- HARDWARE BENCHMARKS
- CLOUD INSTANCE SELECTION
- WINDOWS OS UPGRADES
- CLOUD PC MIGRATION

Production Insights

Early warning detection flags performance and availability issues before they impact users, while deep insights and trending data help resolve underlying problems.

- PROACTIVE ISSUE DETECTION
- AVAILABILITY MONITORING
- ROOT CAUSE ANALYSIS
- HISTORICAL TREND REPORTING

Lifecycle Optimization

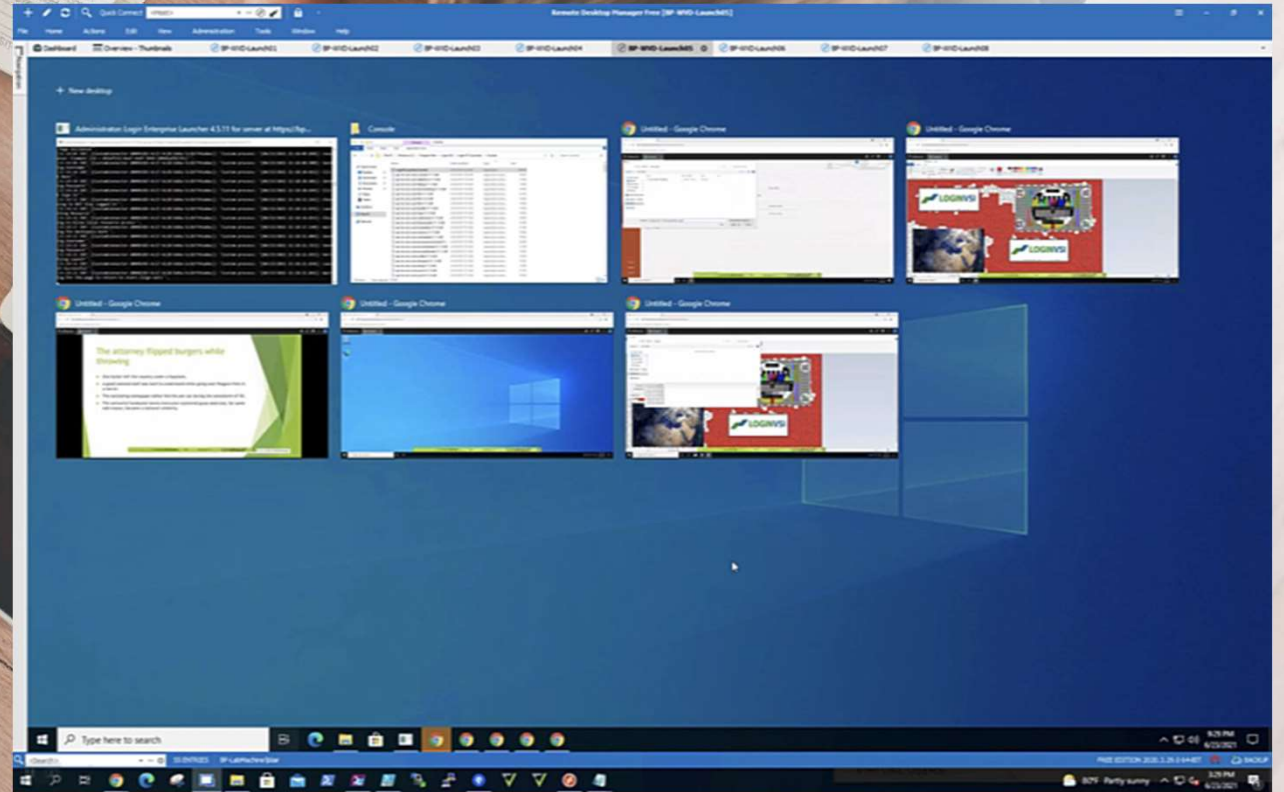
Avoid issues in the future by effectively managing your day two operations across the entire lifecycle—from deployment to retirement and everything in between.

- SERVICE OPTIMIZATION
- EUX BENCHMARKING
- SLA REPORTING
- COST TRACKING

Login Enterprise Knowledge Worker

Workflow

- Browse Web
- Check Email
- Review Spreadsheet
- Write Report
- Create Presentation
- Microsoft Teams can be added



Optimizing Cloud Investments with Smart Analysis



- SKU selection is important
- Costs
 - User Density is key
- Proactive Testing
 - Virtual Users
 - Load Testing

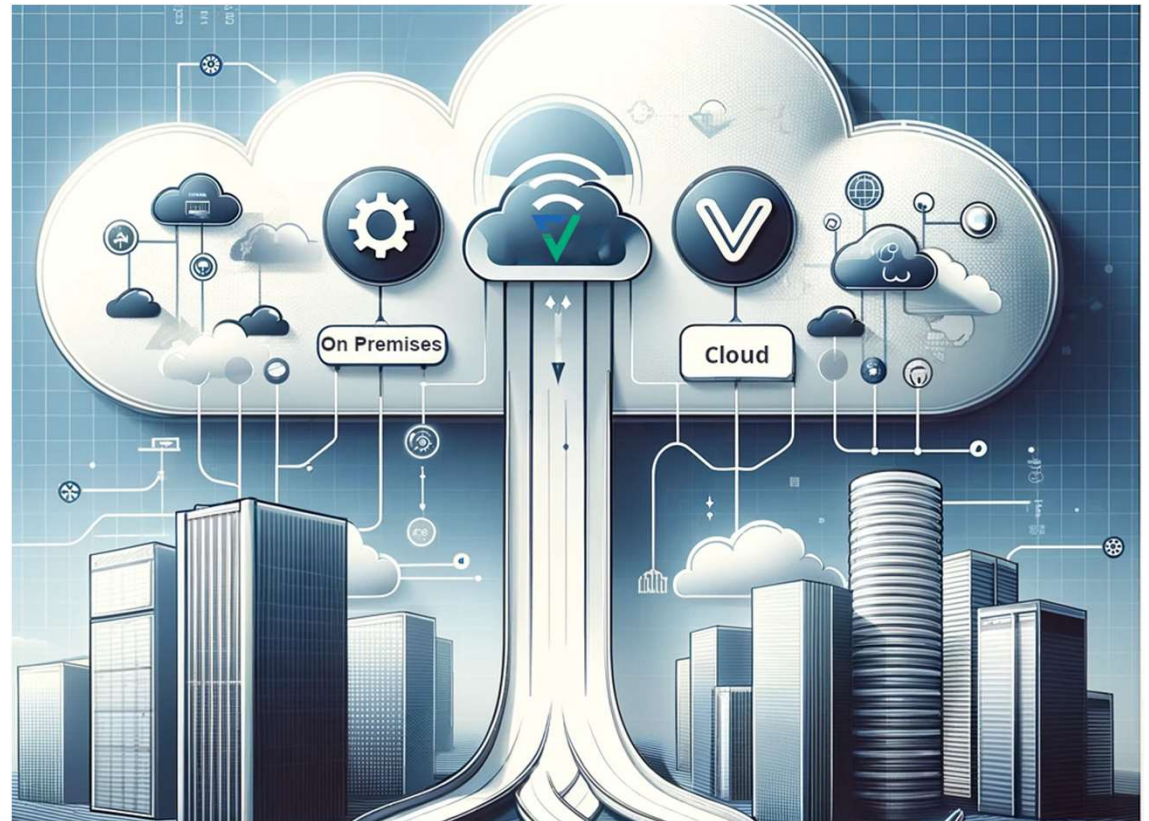
Navigating the Shift from On-Prem to Cloud

■ Challenges

- Cost, Performance, Scalability
- Ensuring performance during transition

■ Proactive Testing

- Virtual Users
- Continuous Monitoring



Facilitating Hypervisor Transitions

■ Vendor Choice

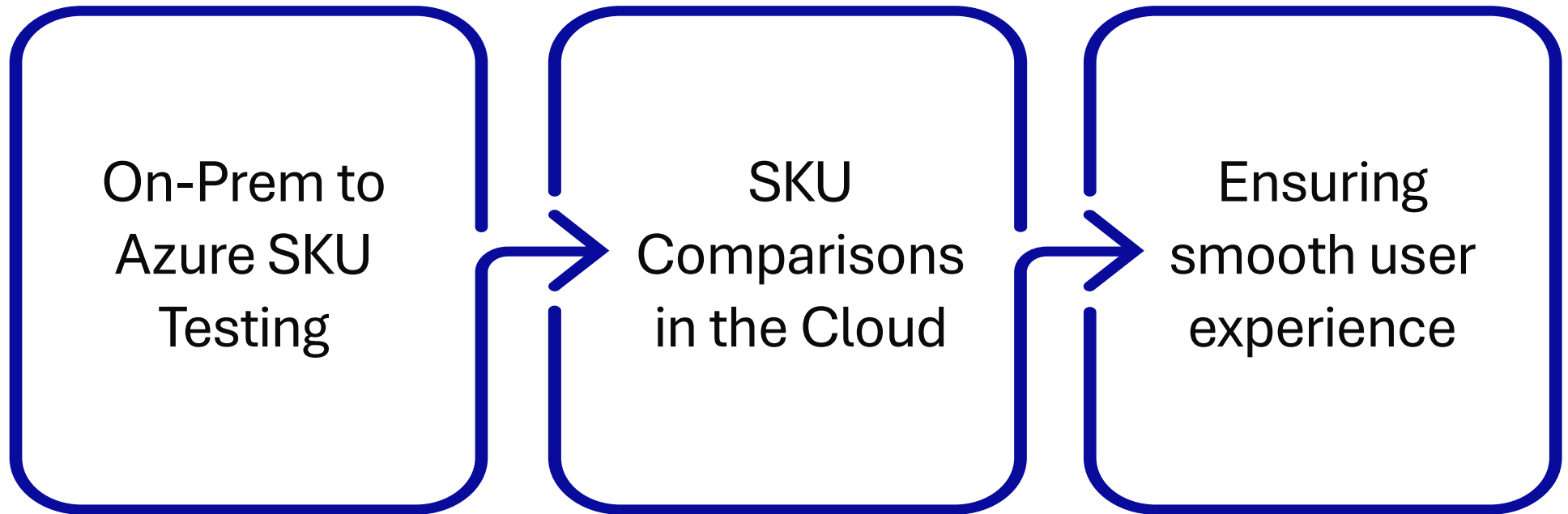
- VMware (vSphere)
- Citrix (XenServer)
- Nutanix (AHV)
- Azure Stack HCI

■ Know your numbers

- Load Testing



Analysis and Results



Resources

Free POC Lab & Product Training

bit.ly/LoginVSIFreeTraining



Slack Community

bit.ly/LoginVSISlackCommunity



Application Workloads

bit.ly/LoginVSITemplates



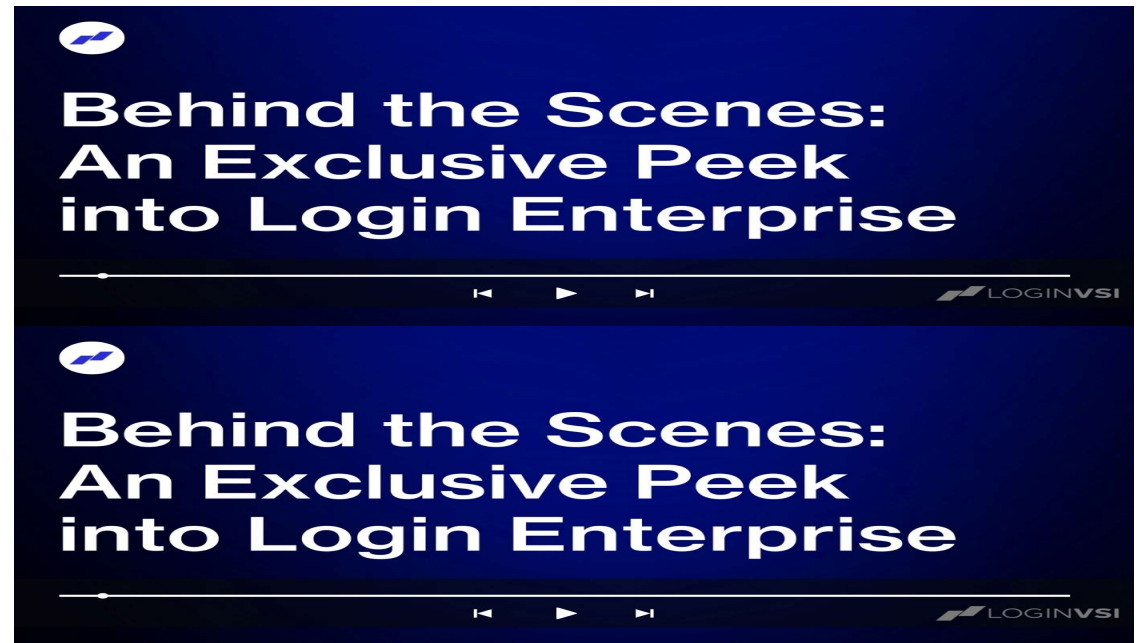
Real Customer ROI Outcomes

bit.ly/LoginVSIROI



Get A Demo

Explore Login Enterprise and schedule an expert-led demo



bit.ly/LoginVSIDemo

The logo consists of a stylized 'A' symbol formed by two parallel diagonal bars, one above the other, slanted upwards from left to right.

LOGINVSI